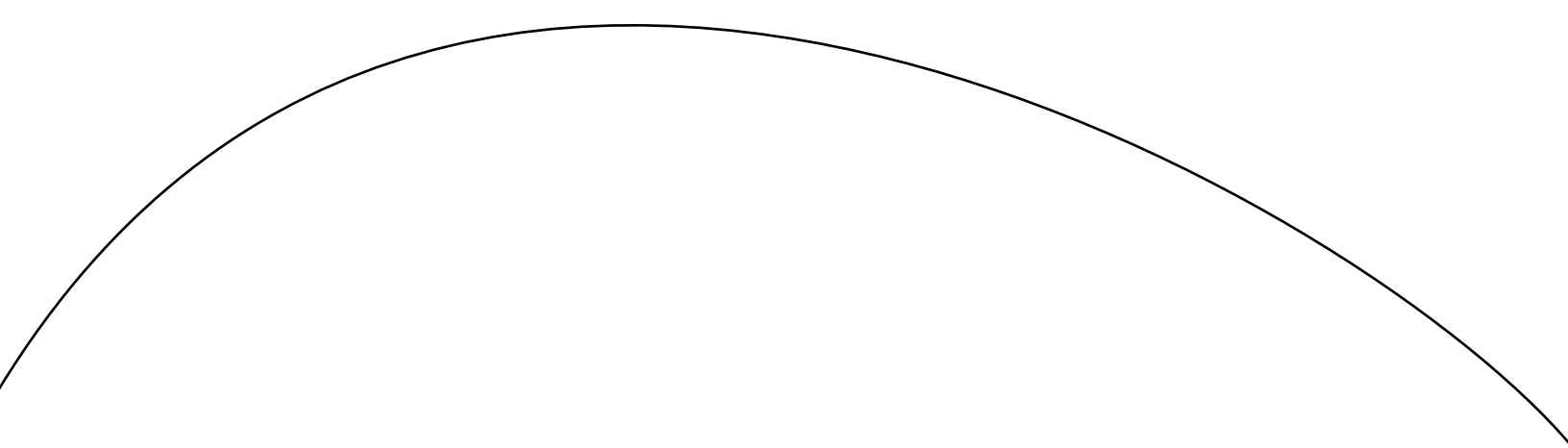


# The Spirit of Enterprise

LOLC Holdings PLC





**Contents**

Our Global Footprint .....2

Structured to Succeed .....4

Making Headway in Growth.....6

10 Year Financial Summary.....9

Awards & Recognition 2021-24 .....10

Financial Services .....14

Success Stories.....42

Customer Testimonials.....43

Progressive Partnerships .....44

Digital & Information Technologies.....46

Advanced Technologies.....50

Browns Group .....52

Our Brands.....54

Manufacturing & Trading .....56

Browns Investments PLC .....59

Agriculture & Plantations.....60

Leisure .....70

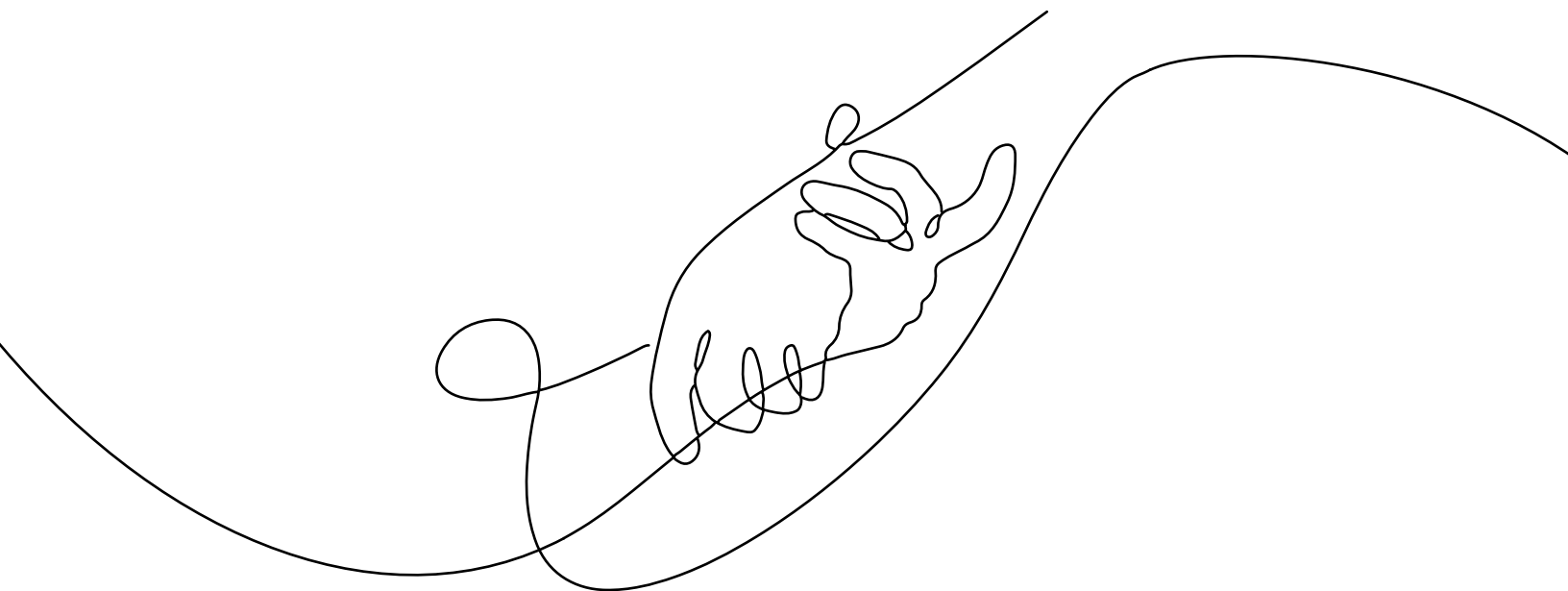
Investments.....83

Construction.....85

Mining .....87

CSR Initiatives .....90

Executive Messages .....92



# The Spirit of Enterprise

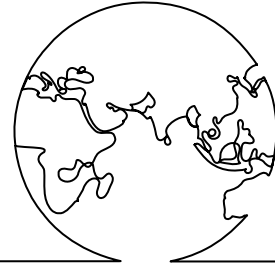
As a dynamic, progressive and globally diversified conglomerate, we at LOLC have mastered the spirit of enterprise. Across every one of our broad spectra of businesses, we have always assured innovative solutions that share growth, value, and progress with our stakeholders.

Today as we aspire to carry forth the value established over the years of our existence, we are nurturing and redefining our corporate strengths to positively impact the communities we serve.

# Our Global Footprint

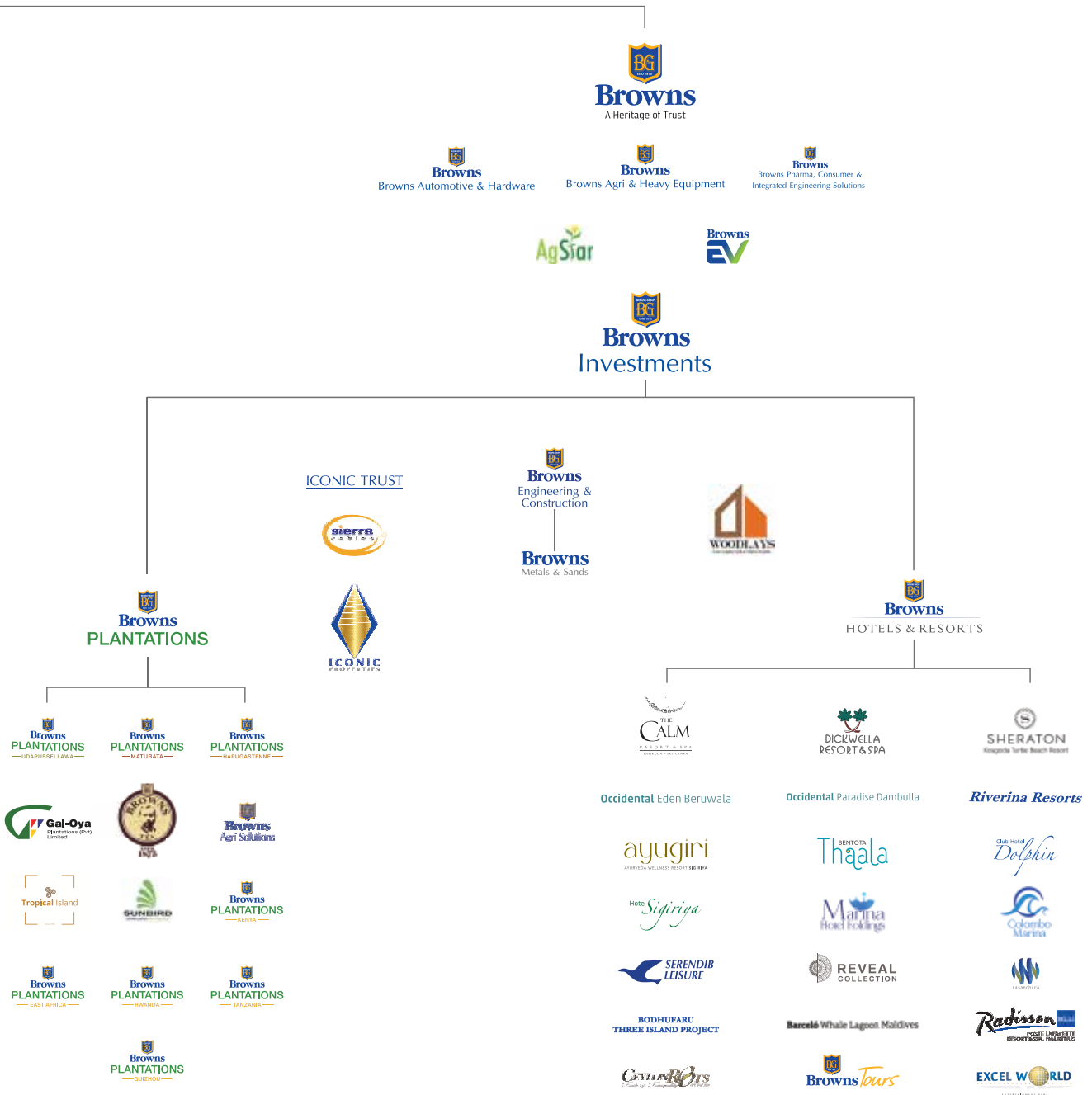
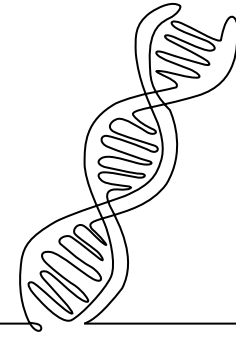






# Structured to Succeed





# Making Headway in Growth

## 1980

- Incorporation of LOLC Holdings PLC



## 1992

- Launches LOLC's first subsidiary- LOLC Factors Limited, in collaboration with IFC

## 1999

- Entered into insurance industry through subsidiary, Lanka Orix Insurance Brokers

## 2001

- Incorporation of LOLC Finance PLC

## 2007

- Maiden overseas expansion to Cambodia by taking a 18% stake in PRASAC with FMO, BIO, Oikocredit, Dragon Capital & PSCo being the other shareholders



- Signed a public private partnership with the Sri Lankan Government to operate Gal Oya Plantations

## 2008

- Incorporation of LOLC Micro Credit Limited in partnership with FMO
- Incorporation of Browns Investments PLC
- Acquisition of Commercial Leasing & Finance PLC



## 2010

- LOLC diversified into the leisure sector by acquiring Eden Resort & Spa, Riverina Resorts and Club Palm Garden

## 2011

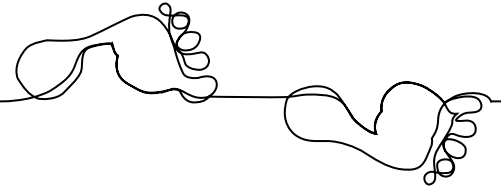
- LOLC transitions to a holding company by relinquishing the leasing license
- Incorporation of LOLC Insurance Company Limited, composite insurer carrying out both life and general insurance

## 2013

- Incorporation of LOLC Myanmar Micro Finance Company Limited; LOLC's green-field micro finance operation in Myanmar
- Acquisition of Nanda Investments by BRAC International and LOLC to form BRAC Lanka Finance PLC
- Acquisition of Green Paradise Resort (subsequently renamed as Paradise Dambulla)

## 2014

- Acquisition of controlling interest in Thaneakea Phum - Cambodia (subsequently renamed as LOLC Cambodia PLC)



## 2015

- Maiden investment in Maldives leisure sector to construct Nasandhura Palace Hotel



## 2016

- Commissioning of Saga Solar Power (Private) Limited, the country's first utility scale solar power plant

## 2017

- Expanded operations into Pakistan through the acquisition of a majority stake in Pak Oman Microfinance Bank Limited (subsequently renamed as LOLC Microfinance Bank- Pakistan)



- LOLC Micro Credit merged with LOLC Finance PLC

## 2018

- Commenced operations in Indonesia by acquiring controlling stake of PT Sarana Sumut Ventura (subsequently renamed as PT LOLC Ventura Indonesia)
- Ceylon Graphene Technologies (Pvt) Ltd was incorporated

## 2019

- Acquired a controlling stake in Inter Asia Development Bank (subsequently renamed as LOLC Bank Philippines) in Philippines
- Acquired a majority stake in Alaylayasa kaunlaran (subsequently renamed as LOLC Finance Philippines) in Philippines
- Maiden investment in the African region through the acquisition of a controlling stake in Fina Trust Microfinance Bank in Nigeria



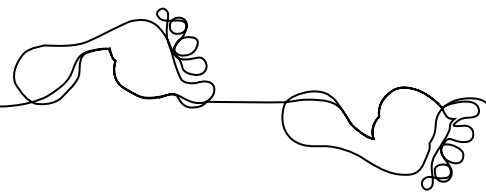
- Invested in Sunbird Bioenergy Limited, an agro-based company in Sierra Leone

## 2020

- LOLC Finance Zambia Limited, LOLC's green-field MSME operation in Zambia commenced operations
- Divested LOLC's 70% stake in PRASAC Cambodia to Kookmin Bank



# Making Headway in Growth



## 2021

- Partners with CHEC for the Investment in the Colombo Port City
- Received regulatory approval to commence Serendib microinsurance in Cambodia
- Acquisition of Fazo-S in Tajikistan
- Acquisition of Karat (LLC LTMKh and LLCTMKhL) in Tajikistan
- Acquisition of Express Credit Limited (subsequently renamed as LOLC Finance- Malawi) in Malawi
- Acquisition of controlling stake in Tujijenge Tanzania Limited in Tanzania



## 2022

- LOLC Finance PLC amalgamated with Commercial Leasing and Finance PLC
- Acquired First Microfinance Company (subsequently renamed as LOLC El-Oula Microfinance Egypt)



- Acquired a majority stake in Key Microfinance Bank, Kenya (subsequently renamed as LOLC Kenya Microfinance Bank)
- Acquired controlling stake in Yambukai Finance in Zimbabwe
- Acquired controlling stake in ABN Microfinance in Kyrgyzstan
- Acquired Radisson Blu, a 100-room hotel in Mauritius
- Ventured into artisanal gold mining industry with the incorporation of Urumaya Resources (Pvt) Ltd in Zimbabwe
- Acquisition of Udupussellawa and Hapugastenne plantations

## 2023

- Acquisition of controlling stake in R-Finance Kazakhstan
- Acquisition of Unguka Bank in Rwanda
- LOLC acquired a minority stake in Pay@bility, Australia

## 2024

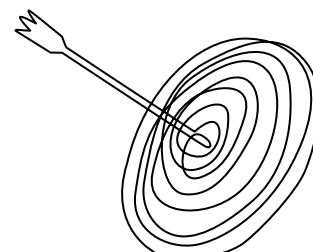
- Acquired James Finlay plantations in Kenya
- Acquired Lipton plantations in Kenya, Tanzania and Rwanda
- Obtained NBFC MFI certificate and commenced microfinance operations in India

## 2025

- LOLC enters the electric mobility sector through the launch of Browns EV
- LOLC acquired a strategic stake in TFS Global Pty Ltd, Australia

# 10 Year Financial Summary

9



LOLC Quarterly  
Financials

For the year ended 31 - March	2016	2017	2018	2019	2020	2021	2022	2023	2024	2025
<b>Group Performance Indicators - USD'000</b>										
<b>USD/LKR</b>	146.05	152.13	155.70	175.47	189.25	199.02	299.00	327.29	301.18	296.35
Gross Income	457,138	602,874	960,284	1,014,693	1,074,639	806,360	749,500	1,017,820	1,121,397	1,146,265
Revenue	138,501	154,086	145,169	141,524	131,838	165,948	181,221	252,263	285,333	378,612
Interest Income	264,667	358,727	672,910	430,879	787,547	448,850	329,686	542,098	564,520	563,598
Income	46,230	50,532	77,277	367,921	97,692	94,542	69,462	75,952	96,050	125,311
Other income	7,739	39,530	64,927	74,369	57,562	97,020	169,132	147,507	175,495	78,743
Profit before operating expenses	241,094	292,145	485,359	511,834	525,004	442,457	432,938	438,113	457,011	707,116
Results from operating activities	59,656	65,510	146,621	146,513	106,347	59,490	191,248	66,948	18,286	162,001
Net profit before tax	81,191	160,312	158,355	152,833	143,330	287,080	279,442	91,852	100,281	144,463
Net profit after tax	63,892	137,579	123,247	111,905	104,580	267,473	259,538	66,203	72,225	138,490
Total other comprehensive income	13,742	23,779	23,528	56,624	54,896	150,717	253,536	30,098	(25,096)	61,089
Total comprehensive income	77,634	161,358	146,775	168,529	159,476	418,190	513,074	96,301	47,129	199,579
Net lending portfolio	1,456,917	2,752,227	3,532,280	4,030,761	4,742,126	2,129,368	2,062,279	2,252,999	2,438,693	2,760,065
Total assets	2,599,073	4,213,008	5,280,922	5,948,295	7,059,017	4,396,259	4,586,854	4,785,152	5,776,229	6,850,645
Total liabilities	2,144,597	3,538,480	4,526,056	5,080,794	5,935,758	3,214,126	3,244,949	3,459,191	4,158,191	4,810,416
Borrowings	1,980,433	3,321,124	4,168,768	4,787,196	5,620,181	2,931,025	2,805,925	3,050,988	3,618,036	4,044,350
Shareholders' funds	454,476	674,528	754,866	867,501	1,123,259	1,182,133	1,341,904	1,325,961	1,618,038	2,040,229
<b>Investor Ratios</b>										
Return on assets (%)	2.88%	4.04%	2.60%	1.99%	1.61%	4.67%	5.78%	1.41%	1.37%	2.19%
Return on equity (%)	14.59%	24.37%	17.24%	13.80%	10.51%	23.20%	20.57%	4.96%	4.91%	7.57%
<b>Key Indicators – USD per share</b>										
Net asset value per share (adjusted)	0.54	0.81	0.95	1.03	1.03	1.46	1.73	1.63	2.09	2.44
Earnings per share (adjusted)	0.12	0.24	0.13	0.14	0.12	0.30	0.43	0.14	0.21	0.35

# Awards & Recognition 2021-24

## LOLC Holdings PLC



Financial Service Provider of the year award at the SLIM KANTAR People's Awards 2021 to 2024



National Honour by the Ministry of Education for LOLC Divi Saviya 2024



LOLC was ranked number 2 among the Business Today Top-30 list in 21/22



Top 10 Women Friendly Workplaces 2021 by CIMA Sri Lanka and Satyn Magazine



LMD 100 – Most Profitable Listed Company in 2020, 2021, 2022 and 2023



Most Popular Corporate Website 2023 - BestWeb.LK



Sri Lanka's Most Admired Companies in 2021 and 2022



Runner Up of the Banking and Finance category in Digital Genesis at SLASSCOM Awards

## LOLC General Insurance



Best General Insurance Company of the Year, Emerging Asia Insurance Awards 2021



Nation's Most Popular Service Providers - General Insurance Category - LMD Magazine



Asia's Best Employer Brand Awards 2021, World HRD Congress in partnership with CMO Asia.



Nation's Most Popular Service Providers - Life Insurance Category - LMD Magazine

## LOLC Technologies



LOLC Technologies Great Workplace to Work Certified 2021/22



iPay emerged as the winner of the FutureEdge 50 for its Payment Platform Deployment in Cambodia



1. Merit Award for Most Outstanding Cybersecurity Solutions Provider of the Year at ISACA Digital Trust Awards 2024
2. CISO (Chief Information Security Officer) of the Year" in the Diversified sector at ISACA Digital Trust Awards 2024
3. Certificate of Recognition at ISACA Digital Trust Awards 2024
4. Gold Award for Best Managed Innovative Project at the National Project Management Excellence Awards 2024





## LOLC Finance

### TECHNOVATION AWARDS - 2022-2024

- Gold Award for Non-bank Financial Institution of the Year in Financial Inclusivity
- Gold Award for Best Mobile Application for Retail Payments via JustPay (Banks and Non-bank Financial Institutions)
- Gold Award for Non-bank Financial Institution of the Year for Excellence in Customer Convenience
- Gold Award for Most Popular Digital Payment Product (Private Commercial Banks and Non-bank Financial Institutions Category – Internet and Mobile Banking)
- Gold Award for Excellence in Digital Payments (Non-bank Financial Institutions)



Green Business  
Commitment of the  
Year award 2023 by  
GBCSL



Best Corporate  
Citizen Sustainability  
Award 2023



Excellence in  
Best Management  
Practices, Company  
Awards  
2022 and 2023



Category Winner in  
Finance –  
BMP Awards 2023



Most Valuable  
Consumer  
Brand 2022  
(Financial Services)  
Brand Finance  
Ratings



LOLC SAVI – Best  
New Credit Card in  
Sri Lanka 2021,  
Banking and Finance  
Review UK



Leasing Company of  
the Year –  
Gold in 2021 & 2022



Overall Silver Winner –  
BMP Awards 2023

## Global Awards



LOLC Cambodia receives a letter of appreciation from the Prime Minister of Cambodia for the contribution to the development of the national economy of the country.



LOLC Cambodia PLC wins award for  
Best institution in data quality



LOLC Cambodia was awarded the Green Lending Award by the Global Climate Partnership Fund for the contribution to reduce the overall CO2 emission and energy consumption of its' branch network.



Yambukai Finance wins Zamfi 2022  
Microfinance Award for Fastest  
Outreach Growing MFI of the year

# Awards & Recognition 2021-24

## Browns Group



Digital Workplace Initiative 2023 -  
Digital Excellence Awards by  
FITIS



Browns Agriculture -  
Sales & After Sales Distributor  
Award 2024 by Massey Ferguson



Browns Agriculture -  
Excellent Award 2023 by Yanmar  
Agri Business Global Conference,  
Japan



Browns Battery & Tyres -  
National Quality Award 2022



Browns Plantations -  
Gold Award at the 12th Annual  
North American Tea Conference  
2023



Sierra Cables -  
Green Business Commitment of  
the Year Award by Green Building  
Council of Sri Lanka  
2023 & 2024



Sierra Cables -  
Gold Award in the Electronic  
and Electrical Products Sector  
in Exports Performance 2021 -  
2023 by NCESL



Sierra Cables - Best Cable  
Manufacturer of the Year - at  
South Asian Business Excellence  
Awards 2021-2023



Sierra Cables - Merit Award at the Sri Lanka  
National Quality Awards organized by  
Sri Lanka Standards Institution



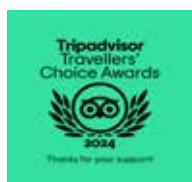
Sierra Cables - Gold Award at the National  
Industry Excellence Awards 2023 by Industrial  
Development Board



Sierra Cables - Best Engineering Service  
Provider and Platinum Sponsor INCO 2024  
organized by Institution of Incorporated  
Engineers, Sri Lanka



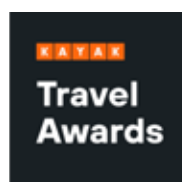
## Browns Hotels & Resorts



TripAdvisor Traveller's Choice Award 2024 - Club Hotel Dolphin, Thaala Bentota, Dickwella Resort, Calm Resort, Hotel Sigiriya, Lantern Boutique Hotel, Stafford Bungalow and Occidental Paradise Dambulla



Holiday Check Award 2024 – Dickwella Resort, Thaala Bentota and Club Hotel Dolphin



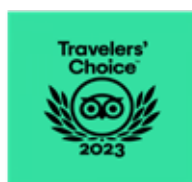
Kayak Travel Award 2024 – Dickwella Resort and Lantern Boutique Hotel



Time 40 Best Wild Places To Stay 2024 – The Lavender House



Schauinsland Reisen Top Hotel Partner Award 2023 – Occidental Eden Beruwala and Club Hotel Dolphin



Traveller's Choice Award 2023 – Club Hotel Dolphin, Thaala Bentota, Calm Resort, Hotel Sigiriya, Lantern Boutique Hotel, Stafford Bungalow, Occidental Paradise Dambulla and Club Hotel Dolphin



Holiday Check Award 2023 – Calm Resort & Club Hotel Dolphin



Booking.com Award 2023 – Club Hotel Dolphin, Thaala Bentota, Dickwella Resort, Calm Resort, Hotel Sigiriya, Lantern Boutique Hotel, Ubuntu Beach Villas, The Beach House, Lavender House, Stafford Bungalow, Occidental Eden Beruwala



Radisson Blu Poste Lafayette - Green Key Certificate 2023



# Financial Services

Driven by an unwavering focus on our customers' success, LOLC is rapidly expanding its' footprint across the globe, building a secure future for underserved communities through market-based solutions. LOLC is making a difference in the MSME landscape by deploying best practices in customer protection, customer experience, risk management, and the application of digital technology. By building the economic strength of individuals, LOLC seeks to propel the GDP growth of its host countries - a mission that ensures our MSME platform stands out in the global financial services industry.

## Sri Lanka:



## International Financial Services Operations:



LOLC Finance



Seylan Bank



LOLC AI-Falaah





LOLC Ventura Indonesia



LOLC Cambodia PLC



Fazo-S Microcredit Deposit Organisation



LOLC Finance Zambia

# Sri Lanka



TOTAL POPULATION

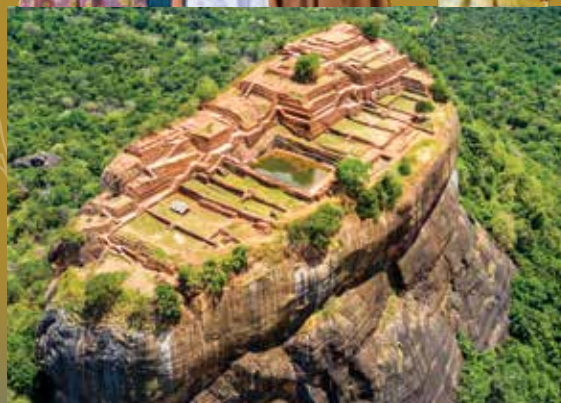
**22.0** Mn

GDP

**\$ 84.4** Bn

GDP PER CAPITA

**\$ 3,828**







Sri Lanka

## Micro, Small & Medium Enterprises

### LOLC Finance PLC



LOLC Finance, the largest Non-Banking Financial Institution in Sri Lanka, provides a comprehensive range of deposit and lending products including technology-backed financial services ranging from microcredit to enterprise solutions. The entity is also listed on the Colombo Stock Exchange.

#### LOAN BOOK

\$ **959.4** Mn

#### NO. OF BORROWERS

**519,125**

#### NO. OF BRANCHES

**212**

### LOLC Al-Falaah, Alternate Financial Services Unit



LOLC Al Falaah is the dedicated Alternate Financial Services Unit of LOLC Finance, established to foster inclusive finance where all products and services are handled in compliance with Islamic principles. Customers can conveniently access the entity's products through Al-Falaah's dedicated centers and LOLC Finance's island-wide branch network.

#### LOAN BOOK

\$ **93.9** Mn

#### NO. OF BORROWERS

**22,568**

#### NO. OF BRANCHES

**192**



Sri Lanka

Banking

## Seylan Bank PLC



Seylan Bank is a licensed commercial bank incorporated in 1987. The bank is listed on the Colombo Stock Exchange. It is the fifth-largest private sector bank in the country in terms of total assets and fourth in terms of footprint with LOLC as its single-largest shareholder with the ownership of a 38% stake in the bank. The bank offers a comprehensive suite of products and services including branch banking, retail banking, corporate and foreign currency banking, and trade finance.

### LOAN BOOK

\$ **1.4** Bn

### TOTAL ASSETS

\$ **2.4** Bn

### NO. OF BRANCHES

**171**

## HDFC Bank of Sri Lanka



HDFC Bank is a listed, licensed specialised bank established in 1984. 70% of the bank's loan portfolio consists of housing loans, keeping in line with the bank's mandate of fulfilling housing-related financial needs. LOLC owns a 15% stake in HDFC Bank.

### LOAN BOOK

\$ **140.7** Mn

### TOTAL ASSETS

\$ **220.0** Mn

### NO. OF BRANCHES

**39**

## SANASA Development Bank PLC



Sanasa Development Bank (SDB) is a listed, licensed specialised bank. SDB focuses on serving the 'bottom of the pyramid' population and aims to be a leading partner of national progress. LOLC became the single-largest shareholder of the bank with the acquisition of a 15% stake.

### LOAN BOOK

\$ **322.4** Mn

### TOTAL ASSETS

\$ **511.4** Mn

### NO. OF BRANCHES

**94**



## Insurance

### LOLC Life Assurance Limited



LOLC Life Assurance is committed to providing comprehensive tailor-made insurance solutions including customised life insurance plans, pension plans, child plans, critical illness plans, and home loan protections. The entity aims to reach closer to its potential customer base in a highly under-penetrated Life Insurance market, where only about 10% of the total eligible population has life insurance in Sri Lanka.

#### GROSS WRITTEN PREMIUM

\$ **18.6** Mn

#### TOTAL ASSETS

\$ **52.3** Mn

#### NO. OF BRANCHES

**85**

### LOLC General Insurance PLC



LOLC General Insurance PLC offers all classes of products in the General Insurance space. It is one of the fastest-growing insurance companies in Sri Lanka. In 2022, the company was listed on the Colombo Stock Exchange with the IPO being oversubscribed by 12.23 times.

#### GROSS WRITTEN PREMIUM

\$ **33.2** Mn

#### TOTAL ASSETS

\$ **65.3** Mn

#### NO. OF BRANCHES

**85**



**Sri Lanka – Stock Broking – Factoring**

**Operating Lease  
Business Units**

**LOLC Securities  
Limited**



LOLC Securities is a trading member of the Colombo Stock Exchange, facilitating value-added services including in-house margin trading, attractive credit facilities, and a sophisticated online trading platform. The company caters to a wide range of local and foreign clientele with the support of a strong research unit.

**TOTAL ASSETS**

**\$ 4.4 Mn**

**LOLC Factors  
Limited**



LOLC Factors commenced operations in 1992 as the first factoring company in Sri Lanka, established to cater to the growing demand for working capital through its range of services including factoring, structured working capital loans, purchase order financing, and cheque discounting.

**TOTAL ASSETS**

**\$ 109.0 Mn**

**LOLC Motors  
Limited**



LOLC Motors was launched in 2010 as a service provider for the LOLC Group's fleet of vehicles and expanded its services to external customers. The entity provides fleet management services to leading multinational companies as well as other enterprises in Sri Lanka.

**TOTAL ASSETS**

**\$ 7.0 Mn**

## Financial Services

### India

Micro, Small & Medium Enterprises

# India



21

TOTAL POPULATION

**1.4** Bn

GDP

**\$ 3.9** Tn

GDP PER CAPITA

**\$ 2,731**



India

**Micro, Small & Medium Enterprises**

**LOLC India Finance (Pvt) Limited**

**LOLC INDIA FINANCE**



LOLC India Finance is a greenfield venture by LOLC, which secured the NBFC MFI license in 2023 to enter the Indian market. The entity is currently providing group loans and focusing on microfinance products.

**YEAR OPERATIONS COMMENCED**

**2024**

**NO. OF BRANCHES**

**7**



# Cambodia



TOTAL POPULATION

**16.9** Mn

GDP

**\$ 31.8** Bn

GDP PER CAPITA

**\$ 1,875**





Cambodia

## Micro, Small & Medium Enterprises

Insurance

### LOLC Cambodia PLC



LOLC Cambodia is a deposit-taking microfinance institution that offers a wide range of financial services. The company is positioned as Cambodia's third-largest microfinance institution in terms of the number of clients, gross loan portfolio, and deposit balance. It has been one of the fastest-growing MFIs in Cambodia through innovative product development and automation initiatives.

#### LOAN BOOK

\$ **1.3** Bn

#### NO. OF BORROWERS

**336,192**

#### NO. OF BRANCHES

**83**

### Serendib Microinsurance PLC (Cambodia)



LOLC ventured into the microinsurance space in Cambodia in 2021. The initial products envisaged are loan protection covers for borrowers of microfinance companies in Cambodia, providing a safety net to the borrower's family members in the event of an unforeseen eventuality. Cambodia's insurance penetration rate is very low at 1.04% while its middle class is the fastest growing in South East Asia.

#### NO. OF INSURANCE COMPANIES

**40**

#### INSURANCE DENSITY

\$ **20.72** per capita

#### SECTOR CONTRIBUTION TO GDP

**1.14** %

# Myanmar



TOTAL POPULATION

**54.6** Mn

GDP

**\$ 64.8** Bn

GDP PER CAPITA

**\$ 1,188**



Myanmar

Micro, Small &  
Medium Enterprises

Insurance

LOLC Myanmar  
Micro-Finance  
Company Limited



LOLC Insurance Myanmar

MYANMAR  
LOLC MICRO FINANCE



LOLC Myanmar, LOLC's Greenfield operation in Myanmar, was incorporated as a licensed deposit-taking microfinance institution in 2013. The company offers a wide range of credit facilities including group loans, and individual loans. Currently, it is among the top five micro-finance institutions in the country in terms of assets.

LOAN BOOK

**\$ 104.4** Mn

NO. OF BORROWERS

**190,885**

NO. OF BRANCHES

**75**



LOLC Insurance is a representative office of LOLC Life Assurance Ltd. LOLC believes in the immense potential in the market with the Myanmar insurance segment being young and underdeveloped along with the lowest insurance penetration rate in the region.

NO. OF INSURANCE COMPANIES

**24**

POPULATION WITH AN INSURANCE  
SCHEME

**4** %

POPULATION AGED BETWEEN 25-54

**42** %

# Pakistan



TOTAL POPULATION

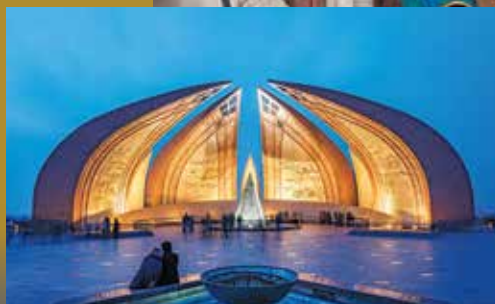
**240.5** Mn

GDP

**\$ 338.4** Bn

GDP PER CAPITA

**\$ 1,407**



Pakistan

**Micro, Small & Medium Enterprises**

**LOLC Microfinance Bank Limited (Pakistan)**



**LOLC**  
**Microfinance Bank**  
(Pakistan)



LOLC Microfinance Bank (previously known as Pak Oman Microfinance Bank) received its microfinance license from the State Bank of Pakistan to commence microfinance activities nationwide, in 2006. The Sultanate of Oman and the Pak Oman Investment Company jointly sponsored the entity. In 2017, LOLC acquired a controlling stake in the Bank. The entity became a fully-owned subsidiary of the LOLC Group in 2022. The bank provides a range of deposits and lending products to its customers.

**LOAN BOOK**

**\$ 14.7** Mn

**NO. OF BORROWERS**

**45,647**

**NO. OF BRANCHES**

**87**



# Philippines



TOTAL POPULATION

**117.3** Mn

GDP

**\$ 437.2** Bn

GDP PER CAPITA

**\$ 3,526**







Philippines

## Micro, Small & Medium Enterprises

### LOLC Bank Philippines Inc.



LOLC acquired controlling interest in LOLC Bank Philippines (previously known as Inter Asia Development Bank) in 2018. The bank offers a comprehensive range of lending and deposit products to its MSME customers.

#### LOAN BOOK

\$ **16.2** Mn

#### NO. OF BORROWERS

**4,855**

#### NO. OF BRANCHES

**11**

### LOLC Finance Philippines Inc.



LOLC ASKI Finance Inc. is a partnership formed in 2019 between LOLC and the ASKI Group of Companies in the Philippines, with LOLC owning the majority stake in the company. The roots of LOLC ASKI Finance can be traced back to April 2017, when the original company, Alaylala Sa Kaunlaran, was formed under the ASKI Group. The entity was rebranded as LOLC Finance Philippines Inc. in 2022. The company offers tailored financial products to its MSME clients.

#### LOAN BOOK

\$ **8.0** Mn

#### NO. OF BORROWERS

**2,460**

#### NO. OF BRANCHES

**8**

# Indonesia



TOTAL POPULATION

**277.5** Mn

GDP

**\$ 1.4** Tn

GDP PER CAPITA

**\$ 4,940**



Indonesia

**Micro, Small &  
Medium Enterprises**

PT LOLC Ventura Indonesia



Recognising the vast untapped potential in Indonesia, LOLC ventured into the country in 2018, acquiring a controlling interest in PT LOLC Ventura (previously known as PT Sarana Sumut Ventura), which was a venture capital company with one branch and without any exposure to micro-finance. LOLC Ventura currently serves the bottom of the pyramid population in Sumatra and Java islands.

LOAN BOOK

**\$ 19.1** Mn

NO. OF BORROWERS

**85,248**

NO. OF BRANCHES

**52**



# Kyrgyzstan



29

TOTAL POPULATION

**7.1** Mn

GDP

**\$ 13.9** Bn

GDP PER CAPITA

**\$ 1,969**



Kyrgyzstan

**Micro, Small &  
Medium Enterprises**

ABN Microfinance Limited



**АБН**  
КЫРГЫЗСТАН  
(KYRGYZSTAN)



ABN Microfinance was incorporated as a credit union in 1998 and was recognised as a microfinance company in 2014. LOLC acquired controlling stake in ABN in 2022. The company currently offers four main product types; consumer loans, business loans, agriculture loans, and quick loans.

LOAN BOOK

**\$ 15.3** Mn

NO. OF BORROWERS

**8,048**

NO. OF BRANCHES

**15**



# Tajikistan



TOTAL POPULATION

**10.1** Mn

GDP

**\$ 12.1** Bn

GDP PER CAPITA

**\$ 1,189**

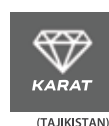




Tajikistan

## Micro, Small & Medium Enterprises

### Karat (LLC LTMKh and LLCTMKhL)



(TAJIKISTAN)



Karat, LOLC's maiden investment in the Central Asian region is the largest chain of pawnshops in Tajikistan. LOLC acquired controlling interest in Karat in 2021. The company has a license to conduct micro-lending and gold loan business. Karat provides loans backed by gold, vehicles, and other property while operating several jewellery stores in Tajikistan.

#### LOAN BOOK

\$ **3.2** Mn

#### NO. OF BORROWERS

**6,226**

#### NO. OF BRANCHES

**21**

### LOLC Moliya



In 2022, LOLC acquired a 100% stake in LOLC Moliya, Tajikistan which is a microcredit and deposit-taking financial institution. LOLC Moliya, Tajikistan provides deposits and loans for agriculture, services, industry and consumer segments. The entity was founded in 2009.

#### LOAN BOOK

\$ **5.0** Mn

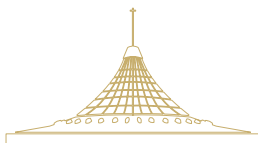
#### NO. OF BORROWERS

**2,178**

#### NO. OF BRANCHES

**9**

# Kazakhstan



TOTAL POPULATION

**19.9** Mn

GDP

**\$ 261.4** Bn

GDP PER CAPITA

**\$ 13,137**



Kazakhstan

Micro, Small &  
Medium Enterprises

R-Finance



R•FINANCE



R – Finance is a microfinance organization incorporated in 2015 in Kazakhstan. The entity provides microcredits secured by cars, special vehicles and commercial vehicles. LOLC acquired a controlling stake in R-Finance in 2023.

LOAN BOOK

**\$ 48.8** Mn

NO. OF BORROWERS

**6,991**

NO. OF BRANCHES

**16**



# Nigeria



Nigeria

Micro, Small & Medium Enterprises

Fina Trust Microfinance Bank Limited



**Fina Trust**  
Microfinance Bank  
(NIGERIA)



LOLC made its maiden venture into Africa in 2018 by acquiring controlling stake in Fina Trust Microfinance Bank, one of the leading microfinance institutions in Nigeria. The company caters to individuals, MSMEs, and employees through the provision of loans, savings, and customised financial products.

LOAN BOOK

\$ **2.3** Mn

NO. OF BORROWERS

**1,759**

NO. OF BRANCHES

**13**

TOTAL POPULATION

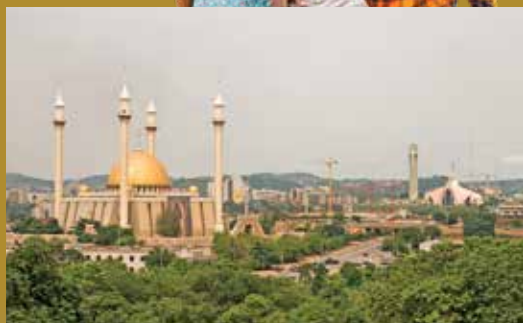
**223.8** Mn

GDP

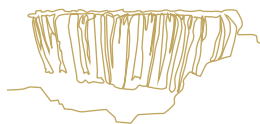
\$ **362.8** Bn

GDP PER CAPITA

\$ **1,621**



## Zambia



TOTAL POPULATION

**20.6** Mn

GDP

**\$ 28.2** Bn

GDP PER CAPITA

**\$ 1,369**



Zambia

**Micro, Small &  
Medium Enterprises**

LOLC Finance Zambia Limited



LOLC FINANCE  
ZAMBIA



LOLC commenced its greenfield operations in Zambia with the deposit-taking non-banking license obtained in 2020. LOLC Finance Zambia offers a range of finance products while focusing on narrowing the access to financial services gap by locating its services close to industrial mining areas.

LOAN BOOK

**\$ 17.7** Mn

NO. OF BORROWERS

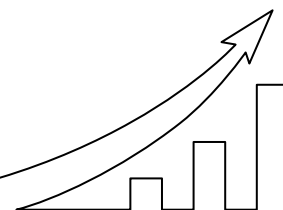
**16,632**

NO. OF BRANCHES

**13**



# Tanzania



TOTAL POPULATION

**67.4** Mn

GDP

**\$ 79.2** Bn

GDP PER CAPITA

**\$ 1,211**



Tanzania

**Micro, Small &  
Medium Enterprises**

Tujijenge Tanzania Limited



In 2021, LOLC acquired controlling interest in Tujijenge Tanzania, a non-deposit-taking microfinance institution, which was incorporated in 2006. Under LOLC ownership, the company will be converted to a deposit-taking microfinance institution providing financial services through group and individual lending to MSMEs. Currently, the entity offers auto loans, business loans, and salary loans to its clients.

LOAN BOOK

**\$ 2.0** Mn

NO. OF BORROWERS

**559**

NO. OF BRANCHES

**5**

## Malawi



TOTAL POPULATION

**20.9** Mn

GDP

**\$ 14.1** Bn

GDP PER CAPITA

**\$ 673**



Malawi

**Micro, Small &  
Medium Enterprises**

**LOLC Finance Limited (Malawi)**



LOLC Finance- Malawi (previously known as Express Credit Malawi), a non-deposit-taking microfinance institution, was acquired by LOLC in 2021. LOLC is currently in the process of converting the company to a deposit-taking entity. The entity currently offers a wide range of lending products such as salary loans, short-term and long-term loans to its' customers.

**LOAN BOOK**

**\$ 1.1** Mn

**NO. OF BORROWERS**

**6,696**

**NO. OF BRANCHES**

**3**

# Kenya



37

TOTAL POPULATION

**55.1** Mn

GDP

**\$ 107.4** Bn

GDP PER CAPITA

**\$ 1,950**



Kenya

**Micro, Small &  
Medium Enterprises**

**LOLC Kenya Microfinance Bank PLC**

**LOLC KENYA**  
**Microfinance Bank**



In 2022, LOLC acquired controlling stake in LOLC Kenya Microfinance Bank PLC (Previously known as Key Microfinance Bank Limited), which operates as a deposit-taking microfinance institution in Kenya. The bank has been in operation since 2010. The bank offers a range of deposit and lending products including personal loans, asset backed loans, and working capital facilities to MSME clients.

**LOAN BOOK**

**\$ 2.5** Mn

**NO. OF BORROWERS**

**842**

**NO. OF BRANCHES**

**7**



# Zimbabwe



TOTAL POPULATION

**16.7** Mn

GDP

**\$ 26.5** Bn

GDP PER CAPITA

**\$ 1,592**



Zimbabwe

**Micro, Small &  
Medium Enterprises**

**Yambukai Finance (Pvt) Limited**



**Yambukai Finance**  
(ZIMBABWE)



Yambukai Finance commenced its operations in the year 2000 as a non-deposit-taking microfinance lending institution in Zimbabwe and LOLC acquired a majority stake in the entity in 2022. LOLC intends to convert the entity into a deposit-taking microfinance institution by replicating its successful MSME business model. Dollarised economy in Zimbabwe is expected to bode well with the entity's expansion plans. The entity currently offers a wide range of products such as salary-based loans, business loans, zero-rate loans, and asset financing.

**LOAN BOOK**

**\$ 3.7** Mn

**NO. OF BORROWERS**

**5,282**

**NO. OF BRANCHES**

**10**





# Egypt



39



Egypt

**Micro, Small &  
Medium Enterprises**

**LOLC El-Oula Microfinance Egypt**

**LOLC** **EL-OULA**  
MICROFINANCE EGYPT



First Microfinance Company (FMC) was incorporated in 2005 and was converted into a microfinance institution in 2018. LOLC acquired FMFC in 2022 and rebranded the entity as 'LOLC El-Oula Microfinance'. It currently offers loan products under income-generating loans, social lending, and SME development categories.

**LOAN BOOK**

\$ **7.5** Mn

**NO. OF BORROWERS**

**19,151**

**NO. OF BRANCHES**

**26**

TOTAL POPULATION

**112.7** Mn

GDP

\$ **395.9** Bn

GDP PER CAPITA

\$ **3,513**



## Rwanda



TOTAL POPULATION

**13.9** Mn

GDP

**\$ 13.7** Bn

GDP PER CAPITA

**\$ 988**



Rwanda

Micro, Small &  
Medium Enterprises

LOLC Unguka Finance PLC



LOLC  
UNGUKA FINANCE



LOLC acquired Unguka Bank Limited in 2023 and rebranded it as LOLC Unguka Finance, shifting the focus to microfinance lending. The entity was incorporated in 2005 as a microfinance institution before evolving into a commercial bank.

LOAN BOOK

**\$ 21.4** Mn

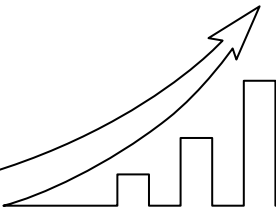
NO. OF BORROWERS

**1,633**

NO. OF BRANCHES

**16**

# Australia



TOTAL POPULATION

**26.9** Mn

GDP

**\$ 1.7** Tn

GDP PER CAPITA

**\$ 66,590**



Australia

Micro, Small & Medium Enterprises

Pay@bility



TFS Global Pty Ltd

Pay@bility



Pay@bility provides benefit administration services and was founded to deliver Australia's first Employee Self-Service model for salary packaging. LOLC acquired a minority stake in Pay@bility in 2023.

TOTAL ASSETS

**\$ 1.4** Mn



TFS Global Pty Ltd, headquartered in Australia, specializes in connecting clients with appropriate lenders and financial institutions, providing tailored guidance through the complexities of borrowing options and financial solutions. In addition, TFS offers expert advisory services in property investments and financial structuring. In 2025, TFS partnered with LOLC to further enhance its capabilities and market reach in delivering innovative financial solutions.

NO. OF BORROWERS

**700+**

## PRASAC Microfinance Institution



As the Group's maiden overseas investment, LOLC acquired an 18% stake in PRASAC Microfinance Institution (PRASAC) in Cambodia in 2007 and subsequently increased the shareholding to 70%. Over the years PRASAC became the largest microfinance company in Cambodia. Kookmin Bank, the largest commercial bank in the Republic of Korea, acquired 70% in 2020 and the remaining 30% in 2021.

### LOAN BOOK

\$ **3.5** Bn

### NO. OF BORROWERS

**454,288**

### NO. OF BRANCHES

**182**

\*At the time of sale

## LOLC Micro Credit



LOLC Micro Credit was set up in 2008 in partnership with FMO (The Netherlands Development Finance Company) which owned 20% of LOMC whereas 80% was owned by LOLC Holdings PLC. LOMC was the largest microfinance institution and agriculture financier in the country. The company played a key role in rural development providing finances for mechanisation and industrialisation in the micro sector. LOLC Micro Credit was amalgamated with LOLC Finance PLC in 2018.

### LOAN BOOK

\$ **336** Mn

### NO. OF BORROWERS

**406,571**

### NO. OF BRANCHES

**129**

\*At the time of merger

## Commercial Leasing & Finance



**COMMERCIAL  
LEASING & FINANCE**



Commercial Leasing and Finance PLC (CLC) was incorporated in 1988 and was known as one of Sri Lanka's leading Non-Banking Financial Service Providers which was listed on the Colombo Stock Exchange. The entity offered solutions ranging from leasing, fixed deposits, savings, loans, flexi cash, microfinance, Islamic finance, and gold loans to factoring. CLC merged with LOLC finance PLC in 2022.

### LOAN BOOK

\$ **416** Mn

### NO. OF BORROWERS

**132,875**

### NO. OF BRANCHES

**68**

\*At the time of merger





Hang Neat lives with her husband and son in Chrous Chrov Pouthisal village, Cambodia. Instead of working as a rubber latex harvester, which is a common job in the village, she gathered the courage to take an entrepreneurial plunge. She availed a loan of USD 1,250 from LOLC Cambodia and utilised the funds to cultivate rubber plants. She gradually obtained two more loans amounting to USD 3,500 from LOLC Cambodia and currently she is a proud owner of a rubber farm with a monthly income of approximately USD 625. "LOLC Cambodia provided solutions for all my problems. They offer not only a suitable price, but their loans gave me sufficient funds to run and expand my business, which improved the daily lives and needs of my family," she said. Hang Neat is one example of more like her who have built their businesses from scratch with the support of LOLC's micro loans.



**Hang Neat**  
Rubber farmer



Daw Win Yee is engaged in traditional paddy cultivation. Every monsoon season Daw obtains funds from informal money lenders who charge high-interest rates. Due to this, a big part of profits was spent on paying interest charges. In 2019, Daw obtained an agriculture loan from LOLC Myanmar. Daw received her 1st agriculture loan amounting to 1,000,000 MMK (USD 540) and was satisfied with LOLC's agriculture loan service due to repayment terms, conditions, and interest rates. Daw continued the next loan cycle as 2nd and 3rd to cultivate paddy without any financial concern during every cultivation season. Daw Win Yee is now on the 7th loan cycle amounting to 2,500,000 MMK (USD 1,350), and she is cultivating paddy twice a year on her 12-acre land.



**Daw Win Yee**  
Paddy farmer



In 2015, Jamilah started a business by selling vegetables, but it did not last long due to her poor health condition. Jamilah's husband encouraged her to start selling meatballs in a small stall in front of her house. In 2018, she got her first financing from LOLC Ventura, Indonesia. Her business developed gradually and transformed into a mini restaurant with the local famous brand – Bakso Dongkrakch. According to her, LOLC Ventura supported her to uplift her family's living standards. Currently, she is expecting to launch another product – Nasi Uduk Dongkrak (tasty milk rice) and is looking forward to increasing business volumes. LOLC wishes to support her by providing individual financing for all her future requirements as a long-term business partner.



**Jamilah**  
Restaurant owner

## Progressive Partnerships

Deutsche Bank



kiva



FMO

Finance for Development

KFW DEG

PROPARCO

CeEB



bio

Development  
through  
Investment



responsAbility



Triodos Investment Management

citibank

CREDIT SUISSE







# Digital & Information Technologies

We firmly believe that information technology is a key constituent of facilitating all business operations of the group towards providing enhanced customer experience. LOLC Group through its centralised, shared IT services provider, LOLC Technologies, continues to be at the forefront of technology innovation and operates as a technology enabler via different digital platforms designed to provide cutting-edge features, performance, security, and unprecedented convenience.





## Sri Lanka



**Sri Lanka**

**Digital Products**

**LOLC Technologies  
Limited**



**OYES**



LOLC Technologies collaborate with world-renowned Information Technology solution providers such as Oracle, Microsoft, and AirWatch to cater to the Information Technology needs of the LOLC Group as well as external customers. LOLC Technologies also has its award-winning cloud-based service management system – OASYS, which is a flagship product of the company.



OYES is a Fintech platform that enables every day to be payday by providing salary advance facilities to employees of corporates that sign up with OYES. OYES algorithm takes into consideration employees' net salary and attendance to calculate the employees' earned salary and facilitate instant access to it at any given time.

### CERTIFICATIONS

**ISO 9000**

**ISO 20000**

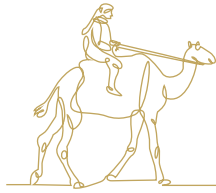
**ISO 27001**

### LAUNCH YEAR

**2022**



UAE



TOTAL POPULATION

**9.5** Mn

GDP

**\$ 504.2** Bn

GDP PER CAPITA

**\$ 52,977**





UAE

## Digital Products

## iPay



iPay is a simple, easy-to-use, real-time payment platform built on an architecture that allows easy integration with any system. The vibrant graphical user interface of iPay promises a unique experience whilst carrying out various types of payments.

## NO. OF USERS

690,000+

## TRANSACTION VALUE

\$ 1,885 Mn

## Fusion X



Fusion X is a next-generation, exponential, cloud-based financial services suite, designed to provide cutting-edge features, performance, and security. Fusion X is based on the first principles of design thinking for banking technology and is geared to facilitate the easy adoption of open banking.

## LAUNCH YEAR

2019



# Advanced Technologies

## Sri Lanka



LOLC's thirst for innovation remains insatiable with a vision to be in a global leadership position for creating a culture that spurs and fosters innovation and creativity. The Group continues to explore technology and innovation and create platforms for innovators to work on exciting projects, leading to improved productivity, competitiveness while contributing to an enhanced quality of life.



Sri Lanka

LOLC Advanced  
Technologies (Pvt) Limited



LOLC Advanced Technologies provide advanced technological consultation support to companies under the LOLC umbrella in the fields of agriculture, spice value addition, new product development in plant nutrition, and agro-chemistry. The entity was set up to explore sustainable business opportunities in the market with the augmentation of science and technology.

### COMPLETED PROJECTS

2

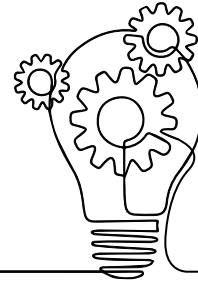
### ONGOING PROJECTS

2

### PROJECTS IN PIPELINE

3





## Advanced Technologies

### Ceylon Graphene Technologies (Pvt) Limited



Ceylon Graphene Technologies (CGT), a joint venture between the LOLC Group and the Sri Lanka Institute of Nanotechnology (SLINTEC), is Sri Lanka's first graphene and advanced material company. CGT is the most competitive graphene manufacturer, product developer, and researcher in the world due to its complete product life cycle.

#### CAPACITY OF THE MANUFACTURING PLANT

**30** MT/pa

#### PRODUCTS

**Graphene Oxide and reduced Graphene Oxide**

### Sun Yield Bio Ingredients (Pvt) Ltd



Sun Yield Bio Ingredients was established to enhance the value of spices such as cinnamon and pepper before exporting them to customers. The products are expected to be commercially available in 2025.

## Browns Group



Established in 1875, the Browns Group has built a strong heritage of trust over one-and-a-half centuries together with global business partners. The legacy of Browns is tightly interwoven with the fortunes of the modern Sri Lankan economy, powering many sectors and industries.

Browns Group was an early catalyst in the plantation sector, which put Sri Lanka on the map of the global economy. As the plantation economy thrived, Browns Group expanded its business activities into engineering, transport, logistics, and commerce. Browns is the most trusted, reliable, and preferred partner of many leading global brands in heavy machinery and haulage solutions, agricultural machinery, farm and animal nutrition, power generation and storage, and many other sectors. Browns energize these sectors in partnership with leading global brands and world-class, state-of-the-art products. The Group, at every stage of its history, has provided an impetus to the local economy. Browns envisions being a diversified conglomerate excelling through the sunrise and sunshine industries with a global presence and cutting-edge technology.

Today, the Browns Group is a part of LOLC Holdings PLC, a globally diversified conglomerate.



### 1875 - 1899

A Pioneering  
Engineering Company.

A Catalyst of the Early Plantation  
Industry.





## 1900 - 1949

Expanding the Engineering Business.

A Pioneer in Logistics and Transportation.



## 1950 - 1974

Powering the Green Revolution of Sri Lanka.



## 1975 - 1999

Rapid Expansion in the Open Market Era.



## The 2000s

Established itself as an Industrial and Agro behemoth.



## Our Brands



### Agriculture



### Battery, Automotive & Generators



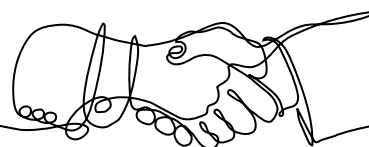
### Pharmaceuticals



### Industrial Engineering Brands







#### General Trading



#### Home and Office Solutions



#### Browns Tect Solutions



#### Marine Services



#### Heavy Machinery





# Manufacturing & Trading

Brown & Company plays a pivotal role in the industrial and automotive value chain. LOLC's acquisition of Brown & Company PLC cemented its' credentials in the manufacturing and trading of world renowned brands. This includes battery, generators, human and veterinary pharmaceuticals, machinery and hardware, home and office solutions, boiler and marine services, heavy machinery, and its own radiator manufacturing plant.



**Browns**

Browns Automotive & Hardware

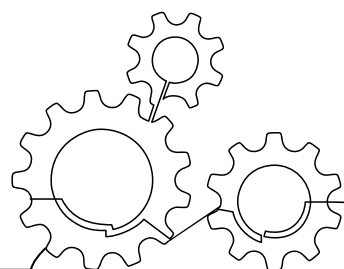


**Browns**

Browns Pharma, Consumer &  
Integrated Engineering Solutions



# Sri Lanka



**Sri Lanka**

**Browns PLC**

## Associated Battery Manufacturers (Cey) Limited



**Browns**

Browns Automotive & Hardware



Associated Battery Manufacturers, incorporated in 1960, manufactures the widest range of Lead Acid Batteries from 25Ah to 200Ah capacity under the brand names Exide, Lucas, and Dagenite. It also produces deep cycle batteries for solar and trawler boat applications. The entity is the largest automotive battery manufacturer in Sri Lanka.

**ANNUAL AUTOMOTIVE BATTERY PRODUCTION**

**560,000**

**MARKET SHARE**

**72 %**

## Browns Pharma (Private) Limited



**Browns**

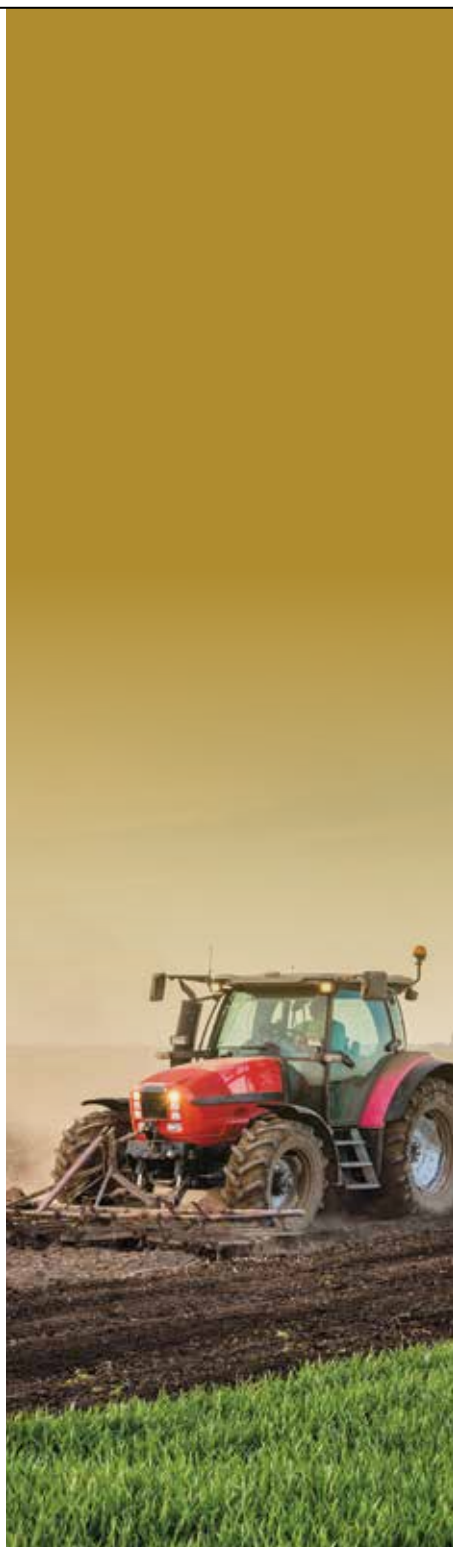
Browns Pharma, Consumer & Integrated Engineering Solutions

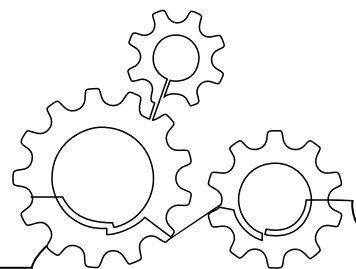


Established in 1990, the Veterinary Pharmaceutical Division of Browns offers total solutions to foster animal health in partnership with leading global veterinary brands. It is the market leader in the biological product segment in Sri Lanka, working with a range of pet care suppliers and pharmaceutical suppliers.

**NO. OF BRANDS**

**14**





Sri Lanka

**Browns PLC**

## Woodlays



Woodlays offers services to the construction industry, specializing in treating structural timber through vacuum pressure impregnation, kiln seasoning, and wooden flooring installation. The company also manufactures treated wooden pallets for exporters and local logistics operations. Additionally, their kiln drying/heat treatment facility is certified by the Quarantine Department of Sri Lanka to provide heat treatment for wooden packaging materials used in global exports.

### CAPACITY OF THE MANUFACTURING PLANT

**20** m3/daily

### CERTIFICATION STANDARD OF THE PRODUCTS

**ISO 9001: 2015**

## Browns Thermal Engineering (Private) Limited



Browns Thermal Engineering (Pvt) Ltd is a large-scale manufacturer of heat exchanges. The entity manufactures coolants and radiators for auto and industrial production under the brand name, RADCO. The company also supplies plastic components to the domestic battery industry.

### MARKET SHARE IN MOTOR VEHICLE RADIATOR MARKET

**70%**

### MARKET SHARE IN INDUSTRIAL RADIATOR MARKET

**85%**

## Browns EV



Launched in 2025, Browns EV represents LOLC's strategic diversification into the electric mobility sector. In partnership with global automotive leaders, the initiative brings high-quality, affordable electric vehicles to the Sri Lankan market. Strengthened by LOLC's ecosystem, Browns EV offers a fully integrated value proposition, including financing, insurance, and after-sales services.

### EV MODELS SOLD

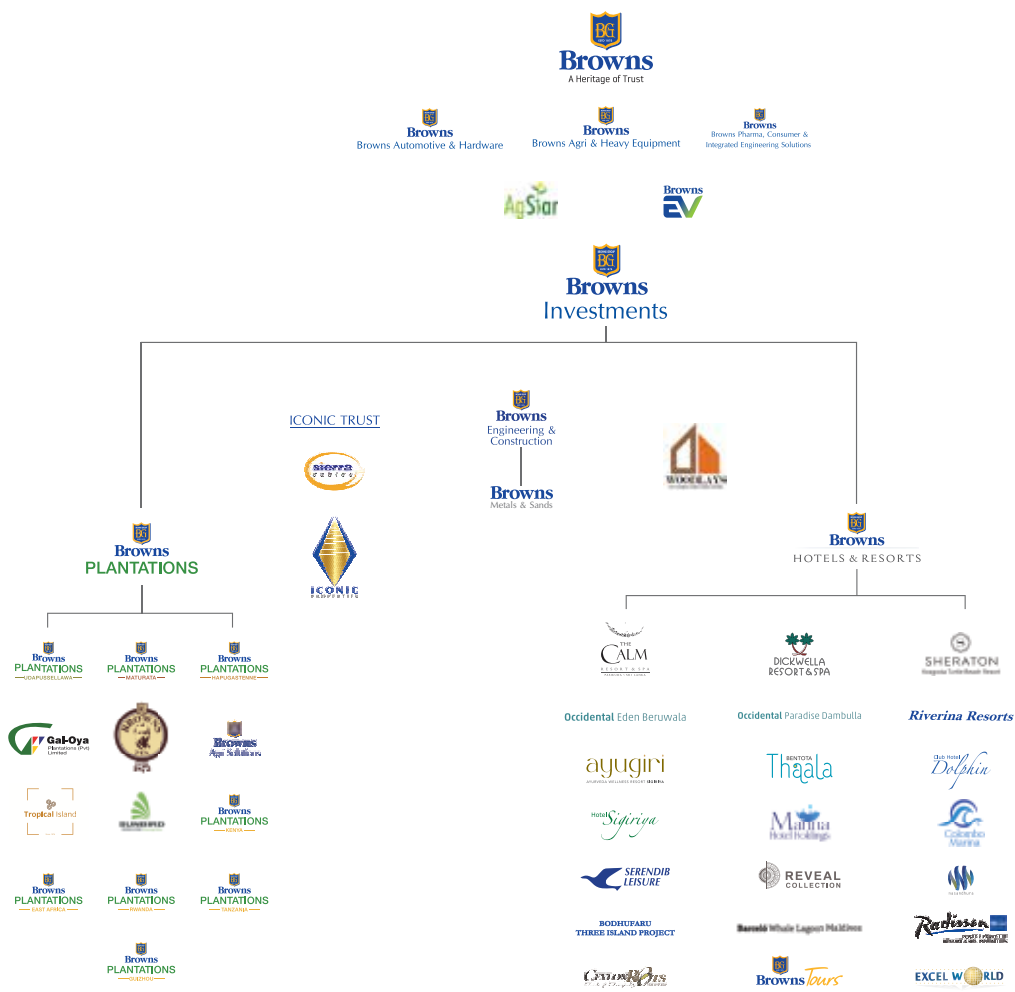
**WULING  
BAW**



## Browns Investments PLC



Browns Investments PLC is the strategic investment arm of LOLC Group. The investments made in mature sunshine industries balance the overall risk profile, profitability, and liquidity perspectives. The key investment sectors include leisure, agriculture and plantations, construction and real estate. Browns Investments will continue to be the Group's arm for future investments into diverse sectors, which are expected to lead the growth of the national economy as an individual investor or in partnership.



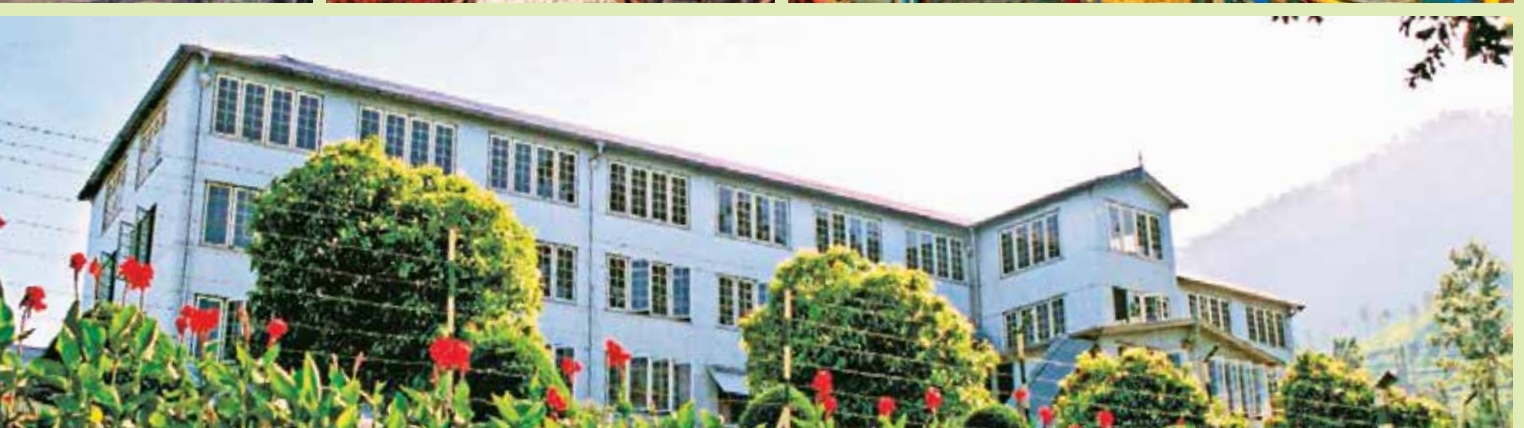
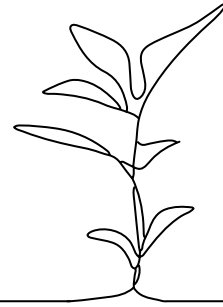


# Agriculture & Plantations

Aligning itself with the country's need for export agriculture and food security, the LOLC Group holds the widest plantation extent in Sri Lanka and Sierra Leone, with the main plantation crops being tea, rubber, cinnamon and sugarcane. Further vertical integration to the value chain has been achieved through related services such as agricultural solutions including agri machinery, seeds and agri inputs for an end-to-end farming solution.







## Sri Lanka



Sri Lanka

### Maturata Plantation Limited



Maturata Plantations is one of the largest tea-producing companies in Sri Lanka as well as being the largest cinnamon plantation in the world. The plantations are located in the Central and Southern provinces in Sri Lanka.

#### NO. OF ESTATES

**19**

#### TOTAL LAND EXTENT

**4,832** Ha

#### ANNUAL PRODUCTION (KG'000)

Tea **4,243**  
Rubber **333**

### Udapussellawa Plantations PLC



Udapussellawa Plantations are located in the Central and Uva provinces in Sri Lanka. The plantations specialised in the cultivation of tea, coffee, commercial forestry, cardamom, coconut, pepper, and cocoa. The entity is listed on the Colombo Stock Exchange.

#### NO. OF ESTATES

**11**

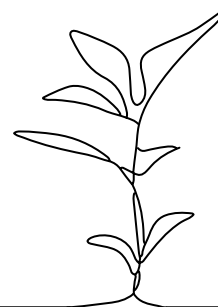
#### TOTAL LAND EXTENT

**3,403** Ha

#### ANNUAL PRODUCTION (KG'000)

Tea **3,358**  
Rubber **34**





## Hapugastenne Plantations PLC



Hapugastenna Plantations are located in the Sabaragamuwa hill range. The plantations are engaged in the cultivation of tea, rubber, commercial forestry, pepper, cinnamon, and cocoa. The entity is listed on the Colombo Stock Exchange.

### NO. OF ESTATES

**19**

### TOTAL LAND EXTENT

**5,329** Ha

### ANNUAL PRODUCTION (KG'000)

Tea **4,902**  
Rubber **1,399**

## Galoya Plantations (Pvt) Limited



Galoya Plantations is a public-private partnership between the Government of Sri Lanka and LOLC Group. Gal Oya is one of the four sugar-producing factories in Sri Lanka and also among the highest-grade ethanol manufacturer in the country. The company engages in producing Bio-Fertilizer and generation of power.

### CULTIVATED LAND EXTENT

**6,046** Ha

### ANNUAL SUGAR PRODUCTION

**19** (MT'000)

### ANNUAL ENA PRODUCTION

**5,532** (000' litres)

## Browns Agri Solutions (Pvt) Limited



Browns Agri Solutions markets crop protection products, local and foreign hybrid seeds, and specialised fertilizers from world-renowned suppliers to the local market. It has created strategic partnerships with global giants in the industry, such as ZGARO, Rainbow, and Nufarm.

### CHANNEL PARTNERS

**200**



Sri Lanka

## AgStar PLC



AgStar is one of the market leaders in importing, blending, and marketing fertilizer products. The entity offers a range of organic and chemical fertilizers and also markets tractors and Agri machinery. AgStar has subsidiaries in fertilizer, crop care and seeds.

### MARKET POSITION IN SRI LANKA

3

## Tropical Island Commodities (Pvt) Limited



Tropical Island Commodities has over 100 years of experience in the production to retail packaging of Ceylon Cinnamon and spices. The company owns a cinnamon plantation with GMP-certified peeling centers. Europe, the United States, and Asia are the main export destinations of the company.

### EXPORT DESTINATIONS

8 Countries

### TYPES OF PRODUCTS

9

## Browns Tea (Pvt) Ltd

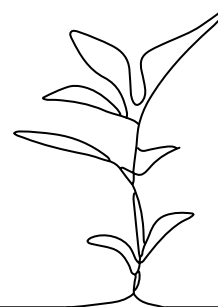
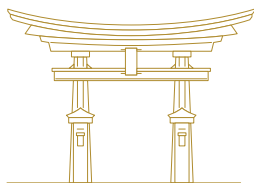


Browns Ceylon Tea is renowned for its hallmark quality and exceptional flavour. Backed by the Group's expertise in the tea industry, Browns Tea provides white label brands for tea importers and traders across the World. From orthodox black tea, instant tea to flavoured teas, the entity's bulk tea range caters to a wide market segment.

### ANNUAL EXPORTS

4.0 Mn Kgs

# CHINA



65

TOTAL POPULATION

**1.5** Bn

GDP

**\$ 17.7** Tn

GDP PER CAPITA

**\$ 12,614**



China

**Browns Plantations (Guizhou)**  
Tea Co., Ltd



In July 2024, LOLO group acquired James Finlay Guizhou [rebranded as Browns Plantation Guizhou (BPG)]. BPG enables beverage brand owners unlock the global potential of Chinese tea by supplying risk-free, traceable tea from China through our ground-breaking sustainable sourcing model.

OUTPUT PER YEAR

**3,600** MT (Scalable with demand)



Kenya



Kenya

Browns Plantation  
Kenya Limited



In 2023, LOLC group acquired James Finlay Kenya Ltd (rebranded as Browns Plantations Kenya Ltd), which is a leading grower, manufacturer and supplier of Kenyan Tea.

TOTAL LAND EXTENT

10,300 Ha

NO. OF ESTATES

9 Estates

Lipton Teas and  
Infusions Kenya PLC



In 2024, LOLC acquired Lipton Teas and Infusions Kenya PLC, a company that produces 33 million kilograms of tea annually through its 8 factories. This acquisition has elevated LOLC to become one of the largest tea companies in the world.

TOTAL LAND EXTENT

14,100 Ha

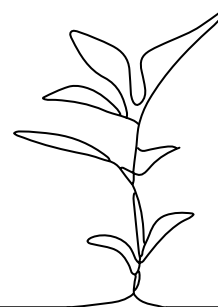
NO. OF ESTATES

11 Estates





# Rwanda



67

TOTAL POPULATION

**13.9** Mn

GDP

**\$ 13.7** Bn

GDP PER CAPITA

**\$ 988**



Rwanda

Lipton Teas and Infusions  
Rwanda Limited



In 2024, LOLC acquired Lipton Teas and Infusions Rwanda Limited, which has an annual production capacity of 2.6 million kilograms of tea. The tea factory is currently under construction and is projected to become operational by the end of 2024.

TOTAL LAND EXTENT

**816** Ha

NO. OF ESTATES

**2** Estates

# Sierra Leone



TOTAL POPULATION

**8.8** Mn

GDP

**\$ 3.8** Bn

GDP PER CAPITA

**\$ 433**



Sierra Leone

Sunbird Sierra Leone



SIERRA LEONE



Sunbird Sierra Leone is a large agro-based company in Sierra Leone with the ability to increase the sugarcane cultivated land extent up to 50,000 Ha along with a sophisticated production facility, which produces Extra Neutral Alcohol (ENA). It is one of the largest economic opportunity providers in the African region with over 5,000 employees. The company generates and exports power to the national grid with a power generation capacity of 32MWh, which is capable of powering 25% of Sierra Leone's electricity requirement.

TOTAL LAND EXTENT

**23,791** Ha

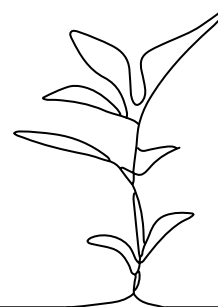
CULTIVATED LAND EXTENT

**6,656** Ha

BIO FUEL PRODUCTION CAPACITY

(Mn Litres) **85** /pa

# Tanzania



TOTAL POPULATION

**67.4** Mn

GDP

**\$ 79.2** Bn

GDP PER CAPITA

**\$ 1,211**



Tanzania

Lipton Teas and Infusions  
Tanzania Limited



  
**Browns**  
**PLANTATIONS**  
— TANZANIA —



In 2024, LOLC acquired Lipton Teas and Infusions Tanzania Limited, which produces approximately 9.4 million kilograms of tea annually through its 4 factories.

TOTAL LAND EXTENT

**28,572** Ha

NO. OF ESTATES

**7** Estates





# Leisure

Following the end of a three decade long conflict in Sri Lanka, the LOLC group invested in the leisure industry of Sri Lanka in 2009. With the success in Sri Lanka, the group expanded its operations to Maldives and Mauritius. The LOLC group is poised to be among the largest leisure property owners in each of the markets it operates in.

Occidental Eden Beruwala

Occidental Paradise Dambulla



**BODHUFARU  
THREE ISLAND PROJECT**



**Barceló Whale Lagoon Maldives**







BENTOTA  
**Thaala**

Club Hotel  
*Dolphin*

Hotel  
*Sigiriya*

**Riverina Resorts**

**SHERATON**  
Kosgoda Turtle Beach Resort

**ayugiri**  
AYURVEDA WELLNESS RESORT SIGIRIYA

REVEAL  
**the beach house**

REVEAL  
**ayr castle 1922**

**Marina**  
Hotel Holdings

**Colombo**  
Marina

**Radisson**  
ROSE LAKSHETTES  
RESORT & SPA, PAJAJITUS

**EXCEL WORLD**  
ENTERTAINMENT PARK

**Browns** *Tours*

**CEYLONROOTS**  
Sustainable Tourism Development



# Sri Lanka



Sri Lanka

## Occidental Eden Beruwala



### Occidental Eden Beruwala



Ensnconced on the edge of the serene beaches of the fishing village of Beruwala, known as the 'Golden Mile', Occidental Eden (formerly known as Eden Resort & Spa) is a member of the Spanish hotel group, Barcelo. The hotel is equipped with modern amenities that cater to sophisticated tastes and styles.

#### TOTAL KEYS

158

#### HOTEL CLASSIFICATION

5 Star

#### LAND EXTENT

5 Acres





## Browns Hotels & Resorts

### Sheraton Kosgoda



Sheraton Kosgoda, managed by the US-based Sheraton Group, is a luxurious resort located on the golden coastline of the South. Adjacent to the famous turtle hatchery in Kosgoda, all the rooms are equipped with modern features facing the picturesque Indian ocean.

#### TOTAL KEYS

**172**

#### HOTEL CLASSIFICATION

**5** Star

#### LAND EXTENT

**5** Acres

### Occidental Paradise Dambulla



#### Occidental Paradise Dambulla



Occidental Paradise (formerly known as Paradise Resort), a member of the Spanish hotel group Barcelo offers a luxurious stay in the very heart of Sri Lanka's famed Cultural Triangle which provides easy access to numerous historically and culturally significant UNESCO heritage sites.

#### TOTAL KEYS

**67**

#### HOTEL CLASSIFICATION

**5** Star

#### LAND EXTENT

**11** Acres

### Dickwella Resort & Spa



Dickwella Resort is a mid-range luxury resort designed for tropical living amidst cozy comforts. The resort is located on a peninsula in Southern Sri Lanka, embraced by the Indian Ocean.

#### TOTAL KEYS

**70**

#### HOTEL CLASSIFICATION

**3** Star

#### LAND EXTENT

**6** Acres





**Sri Lanka**

**Browns Hotels & Resorts**

## Thaala Bentota



BENTOTA  
*Thaala*



Thaala Bentota, a designer hotel by the renowned architect Geoffrey Bawa, is located in Bentota along the west coast of Sri Lanka. The hotel was reopened in 2022 following a major refurbishment to offer superior service and comfort to the guests.

**TOTAL KEYS**

**75**

**HOTEL CLASSIFICATION**

**4** Star

**LAND EXTENT**

**4** Acres

## Club Hotel Dolphin



Club Hotel  
*Dolphin*



Club Hotel Dolphin is an immaculately designed resort sprawling along a stretch of golden beach in Negombo. The hotel reopened its doors in 2022 after a full renovation to offer a luxurious experience to the guests.

**TOTAL KEYS**

**154**

**HOTEL CLASSIFICATION**

**4** Star

**LAND EXTENT**

**14** Acres

## Hotel Sigiriya



Hotel  
*Sigiriya*



Hotel Sigiriya, located in the beating heart of the cultural triangle of the country, overlooking the iconic rock fortress is the ultimate holiday destination for eco-tourists.

**TOTAL KEYS**

**78**

**HOTEL CLASSIFICATION**

**3** Star

**LAND EXTENT**

**9** Acres





## Calm Resort & Spa Pasikuda



Calm Resort & Spa is known as a tropical haven nestled on the pristine beach stretches of the East Coast with elegant rooms, contemporary facilities, and breathtaking ocean views.

### TOTAL KEYS

**70**

### HOTEL CLASSIFICATION

**4** Star

### LAND EXTENT

**7** Acres

## Ayugiri Ayurveda Wellness Resort



In the heart of Sigiriya, Ayugiri Ayurveda Wellness Resort blossoms as the latest addition to Browns Hotels & Resorts' versatile collection. Ayugiri stands out as the only luxury Ayurveda wellness resort in the country offering plunge pools in every room.

### TOTAL KEYS

**22**

### HOTEL CLASSIFICATION

**Ayurveda Wellness**

### LAND EXTENT

**53** Acres

## Riverina Resort & Spa

### *Riverina Resorts*



Riverina Resort is a luxurious star-class resort under construction on a sprawling beachfront property. The hotel is located along the 'Golden Mile' of the famed Bentota beach.

### NO. OF KEYS IN PIPELINE

**365**

### LAND EXTENT

**20 Acres**



Sri Lanka

Browns Hotels & Resorts

Reveal Collection

## Lantern Boutique



REVEAL  
lantern boutique hotel



Lantern Boutique is a beachfront villa featuring large well-appointed bedrooms to offer the comforts of a hotel with a more relaxed atmosphere on the southern coast of Sri Lanka. The in-house restaurant offers a variety of Sri Lankan-infused cuisines to the guests.

TOTAL KEYS

6

HOTEL CLASSIFICATION

Luxury

## The Beach House



REVEAL  
the beach house



The Beach House, a luxurious chic villa, offers incredible ocean views, stunning sunrises, and tropical living at the Mirissa beach. The villa lies in proximity to the locale's most sought attractions and experiences, from whale watching to the scenic Coconut Tree Hill.

TOTAL KEYS

6

HOTEL CLASSIFICATION

Luxury

## Ubuntu Beach Villa



REVEAL  
ubuntu beach villas



Ubuntu beach villas are two standalone villas with two pools located just 300m away from each other. These contemporary villas are designed to complement the surroundings with direct access to the stunning Mirissa beach.

TOTAL KEYS

16

HOTEL CLASSIFICATION

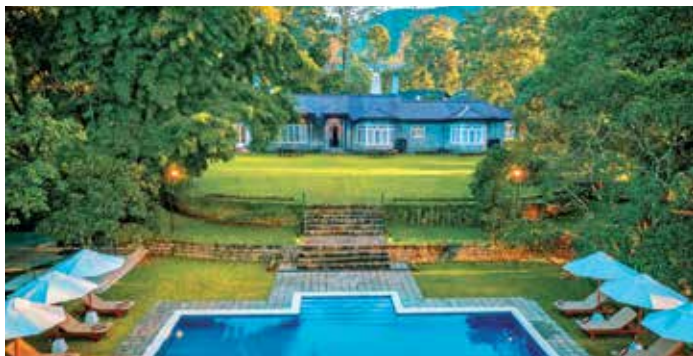
Luxury



## Lavender House



REVEAL  
the lavender house



Lavender House is an English-style planter's bungalow, now converted to a boutique hotel with luxurious rooms amidst a picturesque tea plantation that combines luxury living with the beauty of the highlands in Sri Lanka.

TOTAL KEYS

5

HOTEL CLASSIFICATION

Luxury

## AYR Bungalow

REVEAL  
ayr castle 1922



AYR Bungalow was built in 1922 by a Planter, J. F. Arley Alford in pursuit of his wife-to-be, who was of Scottish nobility. Designed to entirely emulate the architecture of Scottish castles, AYR stands out amongst the landscape as a megalithic monument, built entirely of stone.

TOTAL KEYS

5



Sri Lanka

Port City – Leisure

Entertainment

## Marina Hotel



The Marina Hotel, located within the Colombo Port City, alongside the Colombo Marina, is to be developed as an iconic luxury hotel positioned to attract discerning tourists and business travellers to Sri Lanka. Combined with a magnificent sea view and city view, the hotel will be developed with a classical contemporary ambience.

### NO. OF KEYS IN PIPELINE

**304**

### EXPECTED COMPLETION DATE

**2028**

### LAND EXTENT

**13,006** sqm

## Colombo Marina Development



Colombo Marina Development, located within the Colombo Port City, is a first-of-its-kind investment in Sri Lanka. Post-development, Colombo Marina will create a luxury experience in boating, dining, shopping & nightlife - unparalleled with any other location in Sri Lanka

### BERTHING CAPACITY

**2,550** m

### EXPECTED COMPLETION DATE

**2027**

### LAND EXTENT

**30,776** sqm

## Excel World Entertainment Park



Excel World Entertainment Park is located in the heart of Colombo and continues to offer the whole family a 'one-stop' location for wholesome entertainment which includes arcade games, bowling, a food court, buffets and location services for family events and corporate events.

### NO. OF RESTAURANTS

**5**

### SEATING CAPACITY OF THE BANQUET HALL

**450**





**Sri Lanka**

## Tour and Travel Operators

**Browns Tours  
(Pvt) Limited**



Browns Tours is a global destination management company that offers bespoke outbound tours and B2C inbound travel packages around Sri Lanka.

### BUSINESS EXPERIENCE

**58** years

**Ceylon Roots**



Ceylon Roots is an inbound destination management company that offers personalised services to travellers while providing access to the best hotels, tourist attraction sites, and activities in Sri Lanka and Maldives. The entity also offers customers a complete package of travel tours with exotic encounters centered around tropical locations and colourful antiquity.

# Maldives



TOTAL POPULATION

**0.5** Mn

GDP

**\$ 6.6** Bn

GDP PER CAPITA

**\$ 12,667**



Maldives

## Barcelo Whale Lagoon Maldives

**Barceló** Whale Lagoon Maldives



Barcelo Whale Lagoon Maldives, located on Raa Atoll is a private retreat, which offers luxury in seclusion and exotic views of the waves caressing the pristine shores.

TOTAL KEYS

**100**

LAND EXTENT

**21** Acres



## Maldives Hotels & Resorts

### Nasandhura Palace Hotel & Apartment Complex



Nasandhura Palace Hotel, set in the prime location of Male' city is envisaged to offer a comfortable and luxurious experience along with a taste of urban Male' life. The leading Spanish hotel company, Barceló will collaborate with the LOLC Group for the management of the resort.

NO. OF KEYS

**136**

NO. OF APARTMENTS

**118**

LAND EXTENT

**128** Perches

### Bodhufaru Beach Resort

#### BODHUFARU THREE ISLAND PROJECT



Bodhufaru Beach Resort, nestled in the North Male' (Kaafu) Atoll, surrounded by idyllic beaches, will be designed to offer guests an unforgettable experience in paradise. Barceló Hotel Group will act as the operator of the hotel.

NO. OF KEYS IN PIPELINE

**470**

LAND EXTENT

**5** Acres

# Mauritius



TOTAL POPULATION

**1.3** Mn

GDP

**\$ 14.4** Bn

GDP PER CAPITA

**\$ 11,416**



Mauritius

Radisson Blu Poste  
Lafayette Resort & Spa



Radisson Blu, a star-classed, elegantly designed hotel nestled in a natural white sandy beach, surrounded by clear turquoise waters, offers an opportunity for guests to experience island living in idyllic luxury.

TOTAL KEYS

**100**

NO. OF RESTAURANTS

**4**

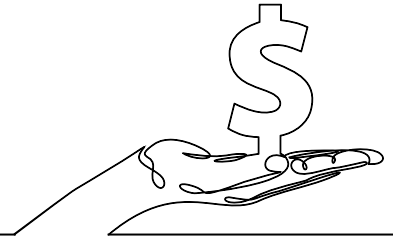






# Investments

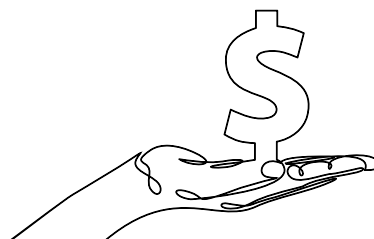
83



The Group having being a pioneer in many arenas, is continuously on the lookout for strategic investments that can create a significant, positive impact within the communities in which it operates, thereby creating value to all stakeholders.



## Sri Lanka



### Sri Lanka

#### Real Estate Portfolio



Real estate investments are an integrated part of the Group's effort in value creation through anti-inflationary asset investment strategy. LOLC intends to focus more on its real estate portfolio due to the fast-growing global demand for office space, warehousing, and residential apartments while property values are on the rise.

#### LEASEHOLD PROPERTY

\$ **808.8** Mn

#### FREEHOLD PROPERTY

\$ **528.8** Mn

#### PickMe



PickMe



PickMe was launched in 2015 as the pioneering, technology-based ride hailing app in Sri Lanka. The app is available in three languages for Android, IOS, and Windows and has now expanded its' services to include food delivery and logistics. The company was listed in the Colombo Stock Exchange in 2024.

#### REGISTERED FREELANCE DRIVERS

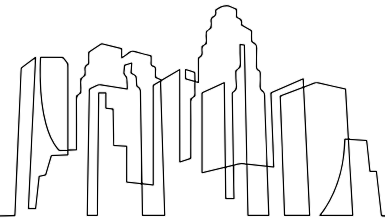
**75,000** +





# Construction

85



Playing a key role in developing infrastructure, LOLC Group has invested in the value chain of the construction industry through its subsidiaries. With investments in the sector, LOLC envisages a tangible difference in people's lives with the creation of economic opportunities, fostering environmental sustainability, and enabling inclusive urbanisation.



## Sri Lanka



### Sri Lanka

#### Browns Engineering & Construction (Pvt) Limited



Browns Engineering is positioned as a leading player in the telecommunication infrastructure development and maintenance industry and is also engaged in Electrical Engineering, MEP design and construction services, project management consultancy, and road construction.

#### ONGOING PROJECTS

**8**

#### PROJECTS IN PIPELINE

**22**

#### Sierra Cables PLC



Sierra Cables, the largest cable manufacturer in Sri Lanka, specialises in designing manufacturing and supplying, and exporting a comprehensive range of copper and aluminum cable products for the energy, industrial, and communications sectors.

#### MARKET SEGMENTS

**4**

#### EXPORT DESTINATIONS

**11 countries**

#### Browns Metal & Sands (Pvt) Ltd

**Browns**  
Metals & Sands



Browns Metal & Sands is still in the pre-operational stage and plans to manufacture stone aggregates, sand, and granite tiles.

#### TOTAL LAND EXTENT

**198** Acres

#### EXPECTED ANNUAL PRODUCTION

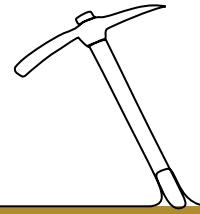
**90,000** Cubes



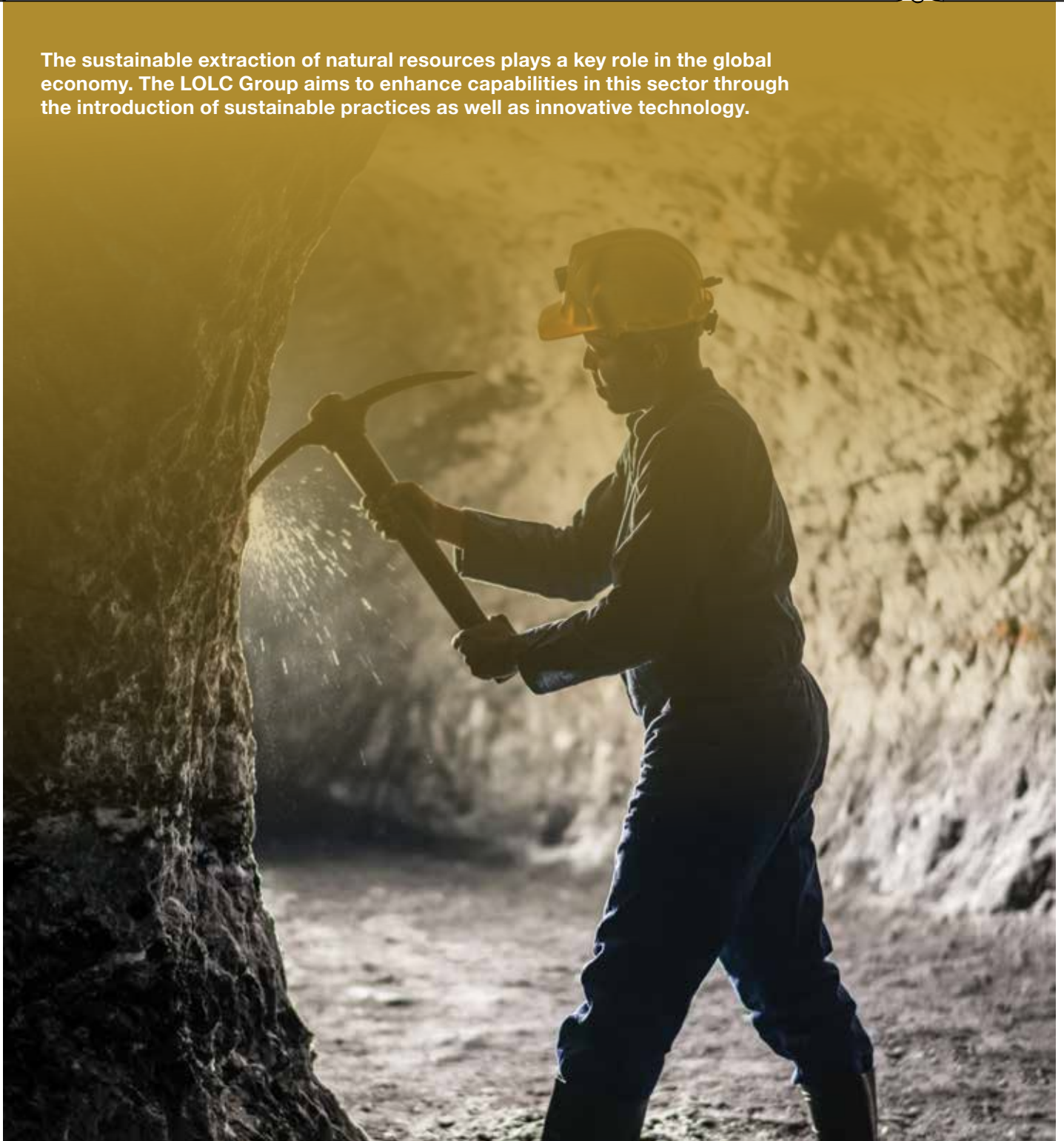


# Mining

87



The sustainable extraction of natural resources plays a key role in the global economy. The LOLC Group aims to enhance capabilities in this sector through the introduction of sustainable practices as well as innovative technology.





# Mining

## Sri Lanka



### Sri Lanka

#### LOLC Geo Technologies Limited



LOLC Geo Technologies holds several exploration licenses from the Government Survey and Mining Bureau (GSMB). The entity is predominantly engaged in the exploration and development of Graphite Mines, installation of Graphite refiners, extraction of Graphite oil-based dry lubricants, and Graphite processing.

#### CARBON PERCENTAGE IN GRAPHITE

**95 %**

#### COMMENCEMENT OF COMMERCIAL PRODUCTION

**2023**

#### Gems



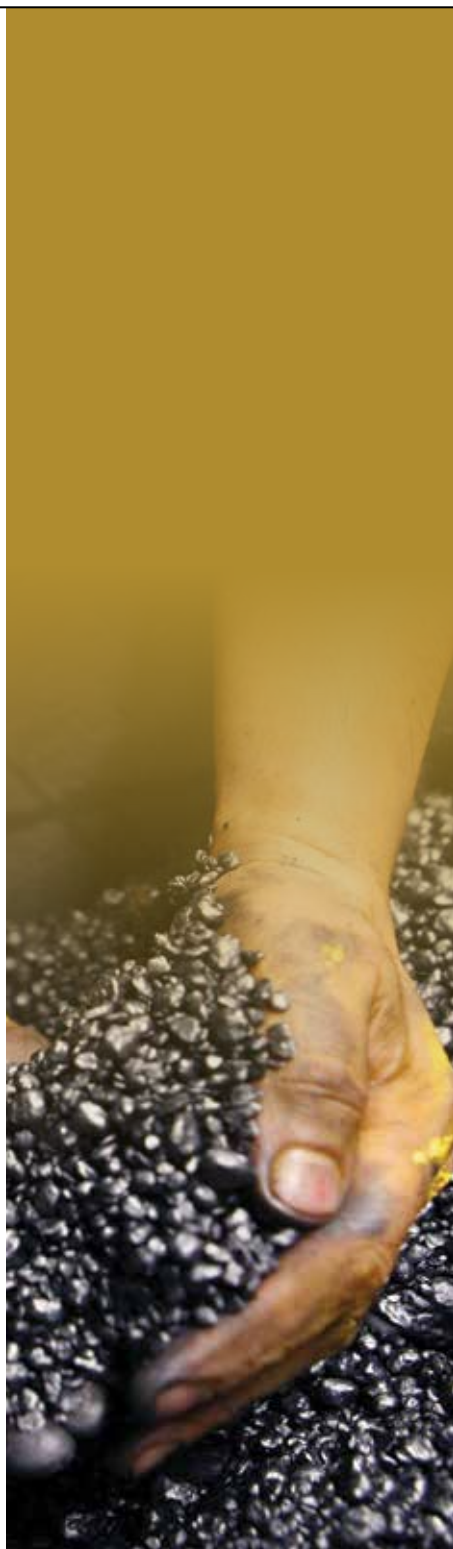
Sri Lanka has been famed for its gems throughout the history as an island nation. The group intends to develop this highly fragmented industry to become a globally recognised industry.

#### POTENTIAL GEM BEARING AREAS IN SRI LANKA

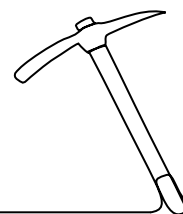
**16,402 km<sup>2</sup>**

#### NUMBER OF GEM TYPES

**75**



## Zimbabwe



### Zimbabwe

#### Urumaya Resources Pvt Limited (Gold exploration & capacitation)



Zimbabwe's mining sector is highly diversified with large scale commercial operations as well as artisanal mines. The country has over 7,500 artisanal mines. Urumaya is now on the mission of empowering and capacitating small-scale gold miners in Zimbabwe with capital and infrastructure while ensuring optimum gold production in a sustainable manner.

#### NO. OF MINING SITES

5

#### NO. OF SITES IN PIPELINE

10

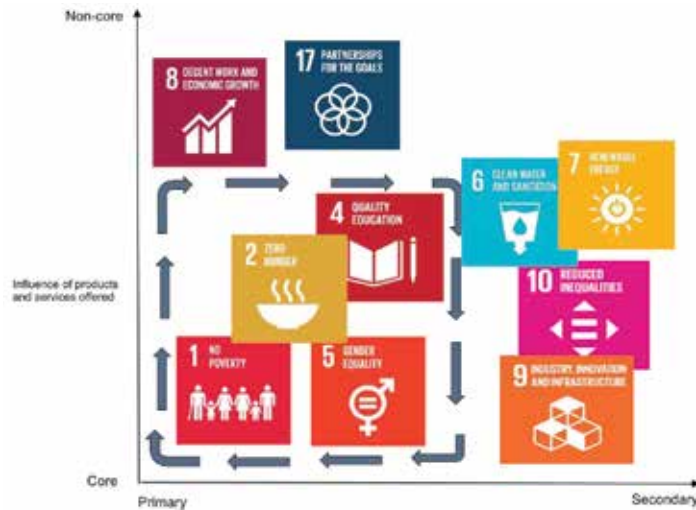
#### AVG. GOLD YIELD

5 g/ton





## Sustainable Development Goals



In line with LOLC's vision for inclusive, sustainable growth, SDGs' recognise the role of financial inclusion and microfinance in reducing poverty, empowering women and Triple-Bottom line growth.

Operating in alignment with the UNSDG's, our portfolio company's products and services have a primary impact on 4 SDG's and on 6 other SDG's to differing degrees.

## Social Capital

### LOLC Divi Saviya Season 01 – “To Win Life”



Conceived as a humanitarian project to provide food for underprivileged families facing the harsh challenges stemming from the economic crisis, the Divi Saviya initiative is founded on the empathy that the LOLC Group has for the citizenry. We realised the need for sustenance and support across the island, as countless families struggled to survive the hardships brought about by the rising cost of living where helpless households were unable to fulfill even the most basic needs such as food.

LOLC is driven to uplift communities from poverty; and in line with its alignment to the UN Sustainable Development Goals (SDGs), the group has prioritised social and economic development of people. This business philosophy has guided and shaped the role it has undertaken to help Sri Lankan communities emerge from the challenges they are facing at this juncture.

The unique project was launched in May 2022 and focussed on distributing food rations to households that were most in need of support during this difficult time. LOLC has worked in collaboration with News First as well as government authorities- namely, the Divisional Secretariats and Grama Sevaka Niladari units- to ensure transparency in distributing food supplies to households living below the poverty line.

The initiative has thus far distributed 150,000 packs valued at \$1.6Mn, supporting around 4.5 million people across the island covering all districts, communities, age groups and religions. In collaboration with News First and the Divisional Secretariats, LOLC will continue to support Sri Lanka's most vulnerable communities to survive.

### LOLC Divi Saviya Season 02 – “For the Future of the Children”



In an effort to empower the education system and support the promising future of Sri Lanka's children, the LOLC Group proudly inaugurated Divi Saviya in February 2023. This ambitious initiative seeks to

provide essential school supplies to the most deserving schools and students across the nation, fostering an environment conducive to learning and growth.

The program, aptly named “Daye Daruwange Anagathaya Wenuwen” (for the future of the children), aims to meet the yearly requirements of school children from grades 1 to 13, including exercise books, school bags, pens, pencils, color boxes, mathematic toolboxes, and other essential stationery items. Through this noble effort, the LOLC Group is committed to alleviating the financial burden faced by many families in providing school requirements of children and enabling students to focus on their studies wholeheartedly.

The ‘Daye Daruwange Anagathaya Wenuwen’ initiative has made significant progress over the time. The program began by distributing essential school materials to over 1,400 schools in phase one.





In its next phase, it reached an additional 1,500 schools, and with the completion of Phase 03, it has supported 1,200 more schools, bringing the total investment to over Rs. 2.5 billion.

LOLC Divi Saviya now has successfully completed Phase 03 of its education initiative, impacting 4,100 schools across Sri Lanka. This milestone achievement extends the program's reach to 40% of the entire school system endorsing LOLC's commitment to supporting the educational needs of students nationwide.

## Environmental Capital

### Sri Lankan Leopard Conservation



The Sri Lankan leopard (*Panthera pardus kotiya*) is the largest of the four wild cat species found in Sri Lanka, and the apex mammalian predator on the island. It is believed that there are less than 1000 leopards roaming in the wild within the

island. Further, the leopard is threatened globally by habitat loss and illegal wildlife trade, while in the human-dominated land-use areas in Sri Lanka.

In addressing this knowledge gap, LOLC Holdings PLC partnered with Wildlife and Nature Protection Society (WNPS) for a 05 year project to establish a network of specialised leopard conservation locations and research centers across identified geographically important areas, within Sri Lanka.

In the initial phase, six research stations will be set up in identified locations across Okanda or Panama, Morningside, Killinochchi, Belihuloya, Maskeliya or Nallathaniya, Sigiriya or Ritigala. The Project will monitor the presence of leopards in selected geographical areas, using camera traps and surveys. The Research Centres will liaise with local wildlife and forest officers, and also serve as educational hubs to generate awareness amongst the local communities, including knowledge dissemination and generating research-based human-leopard conflict mitigation measures.

The Project will provide a critical context for the management and conservation of the Sri Lankan leopard, currently listed as Vulnerable on the IUCN Red List. Recent research has shown that leopard habitat suitability in Sri Lanka is heavily influenced by forest cover, patch size, connectivity, and the level of protection of the landscape, a critical requirement to conserve the island's biodiversity.

### Reforestation and eco system restoration project



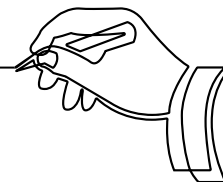
Endowed with a diverse range of forest eco-systems, Sri Lanka is inherent of different topographic, climatic, bio diversities found around the country. However, the recent environmental reports signal a rapid increase of deforestation in

Sri Lankan forests and a degradation of the entire eco system. The reports further identify that the catalysts of deforestation drives are mostly socio-economic in nature, and varies from land encroachment, development projects to expansion ventures.

With a sound understanding on the commitment required, LOLC Finance PLC, the largest Non-Banking Financial Institution (NBFI) of the country, recently entered in to an agreement with Mathurata Plantations and Vibhawa Solutions Private Limited, to concentrate on replanting endangered and endogenous species in degraded natural forests and private lands to support the reforestation efforts to enrich the natural order.

The core target of this project is to plant 20,000 trees ranging from 12,000 fruit plantations, medicinal herb plantations to few other selected native plants. The venture will be entirely funded by LOLC Finance, whereas the planting undertaking will be handled by 'Thuru', under Vibhawa Solutions.





Promoting financial inclusion is our mission. Ensuring customer success is our responsibility. Creating value for all our stakeholders is our pledge.

Our trailblazing journey began in 1981 when Lanka ORIX Leasing Company was formed in association with ORIX Corporation Japan, IFC of The World Bank Group, and other investors from the financial services sector. Today, we are a multinational financial conglomerate focused on establishing a dynamic brand of entrepreneurs and a new middle class among the disadvantaged and underserved communities.

In every country we operate, we impart skills, share expertise, and drive competencies to create thriving and resilient entrepreneurs in a competitive market. Today, we are a proud partner in building emerging economies and developing nations.

Enter their world as our customers share their life changing stories in building successful businesses and creating a promising future for their families and communities.

**Mr. Ishara Nanayakkara**  
Deputy Chairman

We are a diversified financial and industrial conglomerate with significant interests in strategic industries.

Over the last four decades, we have grown from a stand-alone leasing company to a sprawling multi-sector, business group that touches millions of lives every day.

In this narrative of our journey, you will discover how we have nurtured and built high-performing, highly competitive, and growth-oriented enterprises in frontier and emerging economies.

Leveraging our leadership experience, multi-culturally literate talent, and success-assured business processes, we are expanding across the globe to catalyse social and economic growth while securing the investment goals of our funding partners.

We invite you to be a partner in our journey.

**Mr. W D K Jayawardena**  
Group Managing Director/  
Chief Executive Officer



## **LOLC Holdings PLC**

No. 100/1

Sri Jayawardanepura Mawatha,

Rajagiriya 10100

Sri Lanka

Tel: +94 11 588 0880

[www.lolc.com](http://www.lolc.com)











Visit us on

